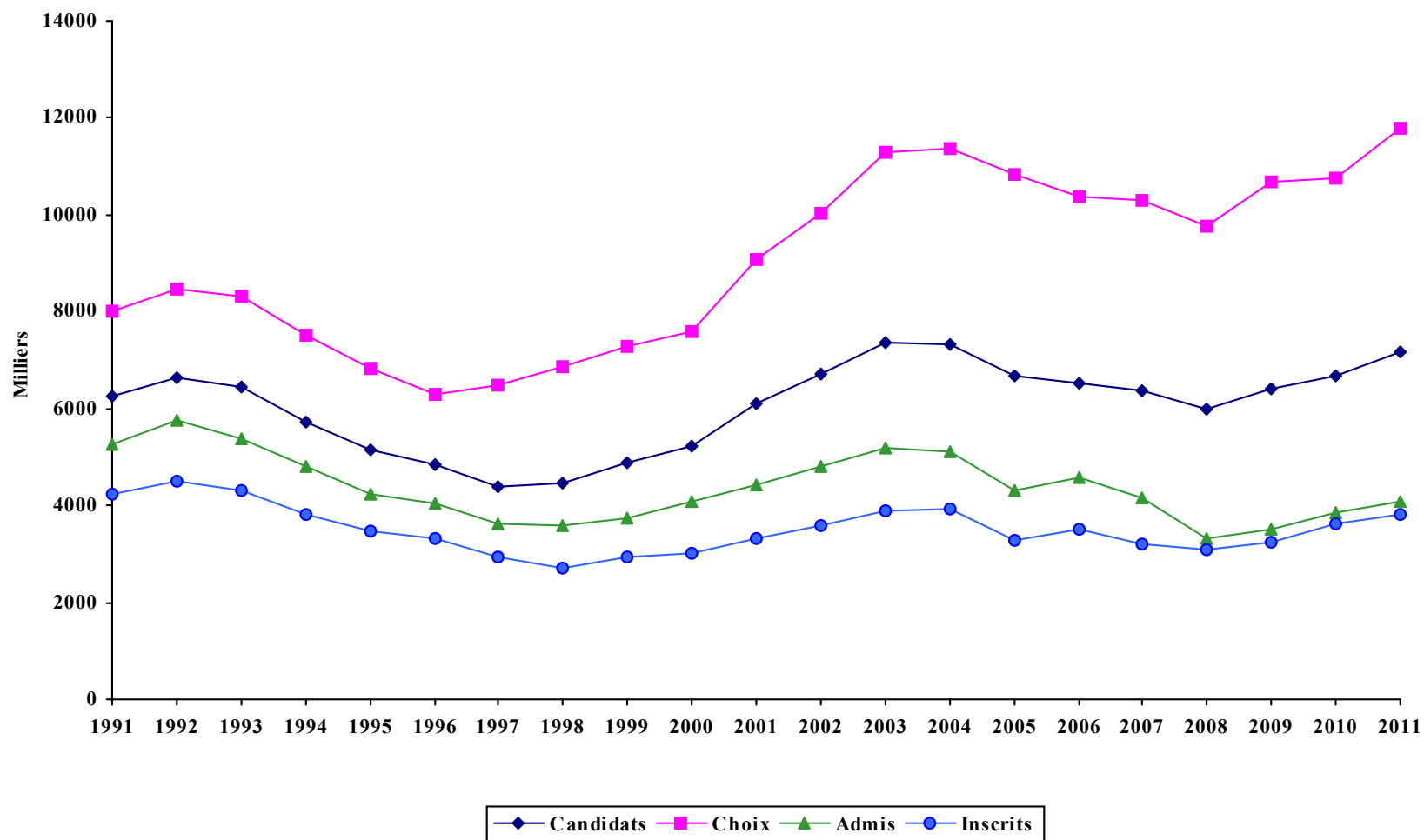


STATISTIQUES D'ADMISSION
HIVER 2011

PREMIER CYCLE - TRIMESTRE D'HIVER

| ANNÉES | CANDIDATS | CHOIX DE PROGRAMME | | CANDIDATS ADMIS | | CANDIDATS INSCRITS | | |
|--------|-----------|--------------------|-----------------|-----------------|-----------------|--------------------|-----------------|-------------|
| | | Choix | N. Par candidat | NOMBRE | % des candidats | NOMBRE | % des candidats | % des admis |
| 1991 | 6250 | 8002 | 1,28 | 5279 | 84% | 4241 | 68% | 80% |
| 1992 | 6626 | 8470 | 1,28 | 5771 | 87% | 4493 | 68% | 78% |
| 1993 | 6436 | 8301 | 1,29 | 5391 | 84% | 4309 | 67% | 80% |
| 1994 | 5705 | 7505 | 1,32 | 4820 | 84% | 3828 | 67% | 79% |
| 1995 | 5158 | 6823 | 1,32 | 4232 | 82% | 3464 | 67% | 82% |
| 1996 | 4847 | 6284 | 1,30 | 4048 | 84% | 3332 | 69% | 82% |
| 1997 | 4386 | 6489 | 1,48 | 3633 | 83% | 2929 | 67% | 81% |
| 1998 | 4470 | 6853 | 1,53 | 3582 | 80% | 2690 | 60% | 75% |
| 1999 | 4869 | 7270 | 1,49 | 3740 | 77% | 2943 | 60% | 79% |
| 2000 | 5244 | 7593 | 1,45 | 4096 | 78% | 3014 | 57% | 74% |
| 2001 | 6105 | 9070 | 1,49 | 4414 | 72% | 3320 | 54% | 75% |
| 2002 | 6708 | 10031 | 1,50 | 4822 | 72% | 3596 | 54% | 75% |
| 2003 | 7367 | 11295 | 1,53 | 5200 | 71% | 3896 | 53% | 75% |
| 2004 | 7309 | 11385 | 1,56 | 5113 | 70% | 3914 | 54% | 77% |
| 2005 | 6668 | 10837 | 1,63 | 4310 | 65% | 3279 | 49% | 76% |
| 2006 | 6506 | 10370 | 1,59 | 4562 | 70% | 3498 | 54% | 77% |
| 2007 | 6358 | 10299 | 1,62 | 4154 | 65% | 3204 | 50% | 77% |
| 2008 | 5975 | 9753 | 1,63 | 3318 | 56% | 3097 | 52% | 93% |
| 2009 | 6410 | 10683 | 1,67 | 3492 | 54% | 3260 | 51% | 93% |
| 2010 | 6685 | 10743 | 1,61 | 3856 | 58% | 3624 | 54% | 94% |
| 2011 | 7178 | 11792 | 1,64 | 4076 | 57% | 3802 | 53% | 93% |

PREMIER CYCLE - TRIMESTRE D'HIVER



PREMIER CYCLE - TRIMESTRE D'HIVER

CAPACITÉS D'ACCUEIL EN PREMIÈRE ANNÉE

| Programmes | Type | 1999 | 2000 | 2001 | 2002 | 2003 | 2004 | 2005 | 2006 | 2007 | 2008 | 2009 | 2010 | 2011 |
|---|---------|------|------|------|------|------|------|------|------|------|------|------|------|------|
| Administration des systèmes informatiques | Mod. | ... | ... | 25 | 105 | 105 | 25 | 25 | 105 | 105 | 105 | 105* | 105* | 105* |
| Chimie | Bacc. | 50 | 50 | ~ | ~ | ~ | ~ | ~ | ~ | ~ | ~ | ~ | ~ | ~ |
| Chimie | Maj. | 50 | 50 | ~ | ~ | ~ | ~ | ~ | ~ | ~ | ~ | ~ | ~ | ~ |
| Chimie | Min. | 50 | 50 | ~ | ~ | ~ | ~ | ~ | ~ | ~ | ~ | ~ | ~ | ~ |
| Communication et Politique | Bidisc. | ... | ... | 15 | 25 | 25 | 25 | 25 | 25 | 0 | 0 | 0 | 25 | 25 |
| Enseignement de l'éthique et de la culture religieuse au secondaire | Bacc. | ... | ... | ... | ... | ... | ... | ... | 19 | 0 | 0 | 0 | 0 | 0 |
| Études cinématographiques et Littérature comparée | Bidisc. | ... | 35 | 15 | 15 | 0 | 0 | 0 | 0 | 0 | 0 | 0 | 0 | 0 |
| Études internationales (orientation) | Bacc. | ... | ... | ... | ... | ... | ... | ... | 10 | 0 | 0 | 10 | 10 | 10 |
| Géographie | Maj. | ... | 50 | 50 | 50 | 50 | 50 | 50 | 50 | ~* | ~* | ~* | 50 | 50 |
| Géographie | Min. | ... | 50 | 50 | 50 | 50 | 50 | 50 | 50 | ~* | ~* | ~* | 50 | 50 |
| Géographie environnementale | Bacc. | ... | 50 | 50 | 50 | 50 | 50 | 50 | 50 | ~* | ~* | ~* | 50 | 50 |
| Gestion de l'information numérique | Cert. | ... | ... | ... | ... | ... | ... | ... | 15 | 15 | 15 | 15 | 15 | 15 |
| Informatique | Bacc. | 70 | 70 | 75 | 70 | 70 | 70 | 70 | 70 | 70* | 70* | 70* | 70* | 70* |
| Informatique | Maj. | 70 | 70 | 75 | 70 | 70 | 70 | 70 | 70 | 70* | 70* | 70* | 70* | 70* |
| Informatique | Min. | 70 | 70 | 75 | 70 | 70 | 70 | 70 | 70 | 70* | 70* | 70* | 70* | 70* |
| Informatique appliquée | Cert. | 60 | 60 | 60 | 105 | 105 | 80 | 80 | 105 | 105 | 105* | 105* | 105* | 105* |
| Kinésiologie | Bacc. | 20 | 35 | 35 | 35 | 35 | 35 | 35 | 35 | 35 | 35 | 35* | 35* | 35* |
| Kinésiologie | Maj. | 20 | 35 | 35 | 35 | 35 | 35 | 35 | 35 | 35 | 35 | 35* | 35* | 35* |
| Kinésiologie | Min. | 20 | 35 | 35 | 35 | 35 | 35 | 35 | 35 | 35 | 35 | 35* | 35* | 35* |
| Mathématiques et Informatique | Bidisc. | 70 | 70 | 75 | 70 | 70 | 70 | 70 | 70 | 70* | 70* | 70* | 70* | 70* |
| Multimédia | Mod. | ... | ... | 25 | 105 | 105 | 25 | 25 | 105 | 105* | 105* | 105* | 105* | 105* |
| Physique et Informatique | Bidisc. | ... | 10 | 15 | 15 | 15 | 15 | 15 | 15 | 15 | 15 | 15 | 15 | 15 |
| Programmation | Mod. | ... | ... | 25 | 105 | 105 | 25 | 25 | 105 | 105* | 105* | 105* | 105* | 105* |
| Psychologie | Min. | 10 | 10 | 12 | 10 | 12 | 25 | 25 | 25 | 25 | 25 | 25 | 25 | 25 |
| Sciences biologiques | Bacc. | 35 | 0 | 20 | 10 | 0 | 0 | 0 | 0 | 0 | 0* | 0 | 0 | 0 |
| Sciences biologiques | Maj. | 35 | 0 | 20 | 10 | 0 | 0 | 0 | 0 | 0 | 0* | 0 | 0 | 0 |

PREMIER CYCLE - TRIMESTRE D'HIVER

CAPACITÉS D'ACCUEIL EN PREMIÈRE ANNÉE

| Programmes | Type | 1999 | 2000 | 2001 | 2002 | 2003 | 2004 | 2005 | 2006 | 2007 | 2008 | 2009 | 2010 | 2011 |
|------------------------------|-------|------|------|------|------|------|------|------|------|------|------|------|------|------|
| Sciences biologiques | Min. | 35 | 0 | 20 | 10 | 0 | 0 | 0 | 0 | 0 | 0* | 0 | 0 | 0 |
| Sciences de la communication | Bacc. | 10 | 10 | 10 | 10 | 10 | 10 | 15 | 10 | 0 | 0* | 0* | 10 | 10 |
| Sciences de la communication | Maj. | 10 | 10 | 10 | 10 | 10 | 10 | 15 | 10 | 0 | 0* | 0* | 10 | 10 |
| Sciences de la communication | Min. | 10 | 10 | 10 | 10 | 10 | 10 | 15 | 10 | 0 | 0* | 0* | 10 | 10 |
| Traduction | Bacc. | 30 | 35 | 35 | 35 | 35 | 35 | 35 | 35 | 35 | 35* | ~* | 35* | 35* |
| Traduction | Maj. | 30 | 35 | 35 | 35 | 35 | 35 | 35 | 35 | 35 | 35* | ~* | 35* | 35* |

* La capacité d'accueil est partagée entre plusieurs programmes de la même discipline

0 Le programme n'accueille pas de nouveaux étudiants

~ Le programme n'est pas contingenté à ce trimestre

... Programme inexistant

PREMIER CYCLE - TRIMESTRE D'HIVER

| FACULTÉS PROGRAMMES | TOTAL DES DEMANDES | | | | REFUS | | | | DÉSISTEMENTS | | | | ADMIS | | | | NOUVEAUX INSCRITS | | | |
|--|--------------------|-----|------|-----|-------|----|------|----|--------------|-----|------|-----|-------|-----|------|-----|-------------------|-----|------|-----|
| | 2010 | | 2011 | | 2010 | | 2011 | | 2010 | | 2011 | | 2010 | | 2011 | | 2010 | | 2011 | |
| | T | H | F | T | T | H | F | T | T | H | F | T | T | H | F | T | T | H | F | T |
| AMÉNAGEMENT | | | | | | | | | | | | | | | | | | | | |
| Design (Design industriel) [bacc.] | | | 1 | 1 | | | | | | | | | | | 1 | 1 | | | 1 | 1 |
| Urbanisme [min.] | 69 | 9 | 9 | 18 | 9 | | | | 33 | 9 | 9 | 18 | 26 | | | | 26 | | | |
| TOTAL DE LA FACULTÉ | 69 | 9 | 10 | 19 | 9 | | | | 33 | 9 | 9 | 18 | 26 | | 1 | 1 | 26 | | 1 | 1 |
| ARTS ET SCIENCES | | | | | | | | | | | | | | | | | | | | |
| Accès études universitaires [prop.] | 325 | 170 | 164 | 334 | 22 | 30 | 27 | 57 | 126 | 46 | 54 | 100 | 177 | 93 | 83 | 176 | 167 | 87 | 81 | 168 |
| Action communautaire [cert.] | 53 | 21 | 44 | 65 | 9 | 2 | 7 | 9 | 28 | 16 | 23 | 39 | 16 | 3 | 14 | 17 | 15 | 3 | 14 | 17 |
| Actualisation de formation [bacc.] | 21 | 5 | 12 | 17 | 5 | | 1 | 1 | 7 | 4 | 7 | 11 | 9 | 1 | 4 | 5 | 8 | 1 | 4 | 5 |
| Administration des systèmes informatiques [mod.] | 13 | 13 | 2 | 15 | 4 | 5 | 1 | 6 | 8 | 6 | 1 | 7 | 1 | | | | 1 | | | |
| Anthropologie [bacc.] | 108 | 43 | 86 | 129 | 12 | 5 | 10 | 15 | 61 | 24 | 44 | 68 | 35 | 13 | 31 | 44 | 34 | 13 | 31 | 44 |
| Anthropologie [maj.] | 31 | 11 | 17 | 28 | 3 | 3 | 4 | 7 | 16 | 4 | 6 | 10 | 12 | 4 | 7 | 11 | 12 | 4 | 7 | 11 |
| Anthropologie [min.] | 37 | 20 | 22 | 42 | 3 | 1 | | 1 | 24 | 9 | 14 | 23 | 9 | 10 | 8 | 18 | 8 | 9 | 8 | 17 |
| Archivistique [cert.] | 70 | 21 | 54 | 75 | 3 | 3 | 3 | 6 | 29 | 5 | 23 | 28 | 38 | 12 | 28 | 40 | 35 | 12 | 28 | 40 |
| Arts et sciences [min.] | 666 | 340 | 466 | 806 | 17 | 14 | 9 | 23 | 280 | 156 | 189 | 345 | 365 | 166 | 267 | 433 | 355 | 157 | 261 | 418 |
| Bac 120 crédits : structure d'accueil [bacc.] | 284 | 159 | 203 | 362 | 31 | 15 | 27 | 42 | 123 | 77 | 87 | 164 | 130 | 67 | 88 | 155 | 127 | 67 | 85 | 152 |
| Bac 120 crédits : transition [bacc.] | 369 | 282 | 185 | 467 | 34 | 63 | 32 | 95 | 240 | 145 | 89 | 234 | 95 | 63 | 60 | 123 | 91 | 53 | 55 | 108 |
| Chimie [bacc.] | 152 | 66 | 90 | 156 | 25 | 21 | 22 | 43 | 86 | 29 | 45 | 74 | 41 | 15 | 22 | 37 | 39 | 15 | 22 | 37 |
| Chimie [maj.] | 26 | 13 | 18 | 31 | 5 | 1 | 5 | 6 | 16 | 10 | 12 | 22 | 5 | 2 | | 2 | 5 | 2 | | 2 |
| Chimie [min.] | 33 | 16 | 25 | 41 | 3 | 1 | 1 | 2 | 23 | 11 | 16 | 27 | 7 | 4 | 8 | 12 | 6 | 3 | 7 | 10 |
| Communication et Politique [bidisc.] | 2 | 1 | | 1 | 2 | | | | | 1 | | 1 | | | | | | | | |
| Démographie [min.] | 10 | 4 | 4 | 8 | 1 | 1 | | 1 | 6 | 1 | 4 | 5 | 3 | 2 | | 2 | 3 | 2 | | 2 |
| Démographie et anthropologie [bidisc.] | 16 | 10 | 7 | 17 | 3 | 2 | 1 | 3 | 12 | 7 | 5 | 12 | 1 | 1 | 1 | 2 | 1 | 1 | 1 | 2 |
| Démographie et Géographie [bidisc.] | 16 | 14 | 4 | 18 | 2 | | | | 11 | 12 | 4 | 16 | 3 | 2 | | 2 | 2 | 2 | | 2 |
| Démographie et Statistique [bidisc.] | 21 | 12 | 8 | 20 | 5 | 3 | 2 | 5 | 13 | 8 | 6 | 14 | 3 | 1 | | 1 | 3 | 1 | | 1 |
| Économie et Politique [bidisc.] | 227 | 133 | 85 | 218 | 53 | 29 | 12 | 41 | 127 | 79 | 57 | 136 | 47 | 25 | 16 | 41 | 45 | 24 | 15 | 39 |

PREMIER CYCLE - TRIMESTRE D'HIVER

| FACULTÉS PROGRAMMES | TOTAL DES DEMANDES | | | | REFUS | | | | DÉSISTEMENTS | | | | ADMIS | | | | NOUVEAUX INSCRITS | | | |
|--|--------------------|------|----|----|-------|------|---|----|--------------|------|----|----|-------|------|---|----|-------------------|------|---|----|
| | 2010 | 2011 | | | 2010 | 2011 | | | 2010 | 2011 | | | 2010 | 2011 | | | 2010 | 2011 | | |
| | T | H | F | T | T | H | F | T | T | H | F | T | T | H | F | T | T | H | F | T |
| Éthique et droit [min.] | | 2 | | 2 | | 1 | | 1 | | 1 | | 1 | | | | | | | | |
| Études allemandes [bacc.] | 13 | 4 | 15 | 19 | | | 1 | 1 | 7 | 3 | 10 | 13 | 6 | 1 | 4 | 5 | 6 | 1 | 3 | 4 |
| Études allemandes [maj.] | 4 | 3 | 2 | 5 | | | | | 2 | 1 | 2 | 3 | 2 | 2 | | 2 | 2 | 2 | | 2 |
| Études allemandes [min.] | 12 | 8 | 7 | 15 | | 1 | | 1 | 7 | 5 | 3 | 8 | 5 | 2 | 4 | 6 | 4 | 2 | 4 | 6 |
| Études allemandes et Histoire [bidisc.] | 5 | 3 | 4 | 7 | 1 | 1 | | 1 | 3 | 2 | 4 | 6 | 1 | | | | 1 | | | |
| Études anglaises [bacc.] | 38 | 14 | 38 | 52 | 2 | 4 | 8 | 12 | 31 | 7 | 25 | 32 | 5 | 1 | 3 | 4 | 5 | 1 | 3 | 4 |
| Études anglaises [maj.] | 14 | 7 | 12 | 19 | | | 1 | 1 | 9 | 6 | 6 | 12 | 5 | 1 | 4 | 5 | 4 | 1 | 4 | 5 |
| Études anglaises [min.] | 28 | 14 | 24 | 38 | 3 | 1 | 5 | 6 | 16 | 11 | 10 | 21 | 9 | 2 | 9 | 11 | 9 | 2 | 8 | 10 |
| Études anglaises et Littérature comparée [bidisc.] | 6 | 3 | 12 | 15 | | | 3 | 3 | 5 | 3 | 7 | 10 | 1 | | 1 | 1 | 1 | | 1 | 1 |
| Études arabes [min.] | 8 | 9 | 6 | 15 | 1 | | | | 6 | 4 | 3 | 7 | 1 | 5 | 3 | 8 | 1 | 5 | 3 | 8 |
| Études cinématographiques [maj.] | 55 | 24 | 14 | 38 | 6 | 4 | 3 | 7 | 27 | 11 | 9 | 20 | 22 | 9 | 2 | 11 | 22 | 8 | 2 | 10 |
| Études cinématographiques [min.] | 51 | 28 | 30 | 58 | 6 | 1 | 1 | 2 | 25 | 21 | 22 | 43 | 19 | 6 | 7 | 13 | 19 | 6 | 7 | 13 |
| Études classiques [bacc.] | 9 | 6 | 5 | 11 | | 2 | | 2 | 6 | 2 | 3 | 5 | 3 | 2 | 2 | 4 | 3 | 2 | 2 | 4 |
| Études classiques [maj.] | 5 | 2 | | 2 | | | | | 1 | 1 | | 1 | 4 | 1 | | 1 | 4 | | | |
| Études classiques [min.] | 6 | 2 | 3 | 5 | 1 | | | | 1 | 1 | 1 | 2 | 3 | 1 | 2 | 3 | 3 | 1 | 2 | 3 |
| Études classiques et anthropologie [bidisc.] | 8 | 1 | 8 | 9 | | | 1 | 1 | 4 | 1 | 5 | 6 | 4 | | 2 | 2 | 4 | | 2 | 2 |
| Études est-asiatiques et Anthropologie [bidisc.] | 17 | 3 | 9 | 12 | 4 | | 1 | 1 | 7 | 2 | 2 | 4 | 6 | 1 | 6 | 7 | 6 | 1 | 6 | 7 |
| Études est-asiatiques [maj.] | 15 | 3 | 8 | 11 | 5 | | 3 | 3 | 4 | 2 | 2 | 4 | 5 | 1 | 3 | 4 | 5 | 1 | 3 | 4 |
| Études est-asiatiques [min.] | 10 | 5 | 5 | 10 | | 1 | | 1 | 5 | 4 | 3 | 7 | 5 | | 2 | 2 | 5 | | 1 | 1 |
| Études est-asiatiques et Géographie [bidisc.] | 11 | 3 | 4 | 7 | 3 | 1 | | 1 | 8 | 1 | 4 | 5 | | 1 | | 1 | | 1 | | 1 |
| Études est-asiatiques et Histoire [bidisc.] | 9 | 4 | 8 | 12 | | 1 | | 1 | 5 | 3 | 5 | 8 | 4 | | 3 | 3 | 4 | | 3 | 3 |
| Études hispaniques [bacc.] | 28 | 6 | 18 | 24 | 3 | 1 | 1 | 2 | 13 | 4 | 14 | 18 | 12 | 1 | 3 | 4 | 12 | 1 | 3 | 4 |
| Études hispaniques [maj.] | 16 | 4 | 7 | 11 | 2 | | 1 | 1 | 7 | 2 | 3 | 5 | 7 | 2 | 3 | 5 | 7 | 2 | 2 | 4 |
| Études hispaniques [min.] | 40 | 13 | 23 | 36 | 4 | 1 | 1 | 2 | 26 | 7 | 13 | 20 | 9 | 5 | 8 | 13 | 8 | 4 | 7 | 11 |
| Études italiennes [maj.] | 2 | | 2 | 2 | | | | | 2 | | 2 | 2 | | | | | | | | |
| Études italiennes [min.] | 9 | 1 | 12 | 13 | 1 | | 3 | 3 | 4 | 1 | 5 | 6 | 4 | | 4 | 4 | 4 | | 4 | 4 |
| Études latino-américaines [min.] | 10 | 2 | 6 | 8 | 1 | | | | 9 | 2 | 3 | 5 | | | 3 | 3 | | | 2 | 2 |
| Études médiévales [maj.] | 3 | 1 | 1 | 2 | | | 1 | 1 | 2 | 1 | | 1 | 1 | | | | 1 | | | |
| Études médiévales [min.] | 4 | 2 | 2 | 4 | | | 1 | 1 | 2 | 1 | | 1 | 2 | 1 | 1 | 2 | 1 | 1 | 1 | 2 |

PREMIER CYCLE - TRIMESTRE D'HIVER

| FACULTÉS PROGRAMMES | TOTAL DES DEMANDES | | | | REFUS | | | | DÉSISTEMENTS | | | | ADMIS | | | | NOUVEAUX INSCRITS | | | |
|--|--------------------|------|----|-----|-------|------|----|----|--------------|------|----|-----|-------|------|----|----|-------------------|------|----|----|
| | 2010 | 2011 | | | 2010 | 2011 | | | 2010 | 2011 | | | 2010 | 2011 | | | 2010 | 2011 | | |
| | T | H | F | T | T | H | F | T | T | H | F | T | T | H | F | T | T | H | F | T |
| Études néo-helléniques [cert.] | | 1 | | 1 | | | | | | | | | | 1 | | 1 | | 1 | | 1 |
| Études québécoises [min.] | 9 | 7 | 14 | 21 | | | | | 7 | 6 | 11 | 17 | 2 | 1 | 3 | 4 | 2 | 1 | 3 | 4 |
| Géographie [maj.] | 17 | 9 | 4 | 13 | 5 | 1 | | 1 | 10 | 8 | 2 | 10 | 2 | | 2 | 2 | 2 | | 2 | 2 |
| Géographie [min.] | 26 | 14 | 12 | 26 | | | 1 | 1 | 14 | 12 | 9 | 21 | 12 | 2 | 2 | 4 | 12 | 2 | 2 | 4 |
| Géographie environnementale [bacc.] | 81 | 52 | 33 | 85 | 12 | 6 | 4 | 10 | 41 | 32 | 16 | 48 | 28 | 14 | 13 | 27 | 27 | 13 | 13 | 26 |
| Gestion de l'information numérique [cert.] | 47 | 30 | 31 | 61 | 5 | 2 | 2 | 4 | 19 | 17 | 14 | 31 | 22 | 11 | 15 | 26 | 20 | 10 | 15 | 25 |
| Histoire [bacc.] | 107 | 65 | 65 | 130 | 7 | 9 | 8 | 17 | 69 | 33 | 39 | 72 | 31 | 23 | 18 | 41 | 31 | 22 | 17 | 39 |
| Histoire [maj.] | 26 | 12 | 11 | 23 | | 2 | | 2 | 15 | 8 | 9 | 17 | 11 | 2 | 2 | 4 | 11 | 2 | 1 | 3 |
| Histoire [min.] | 39 | 28 | 26 | 54 | | 2 | 3 | 5 | 23 | 16 | 18 | 34 | 16 | 10 | 5 | 15 | 15 | 10 | 5 | 15 |
| Histoire de l'art [bacc.] | 46 | 11 | 34 | 45 | 2 | 3 | 4 | 7 | 30 | 8 | 19 | 27 | 14 | | 10 | 10 | 14 | | 9 | 9 |
| Histoire de l'art [maj.] | 12 | 2 | 12 | 14 | | 1 | | 1 | 9 | 1 | 8 | 9 | 3 | | 4 | 4 | 3 | | 4 | 4 |
| Histoire de l'art [min.] | 46 | 8 | 22 | 30 | 5 | | 3 | 3 | 31 | 4 | 15 | 19 | 10 | 4 | 4 | 8 | 7 | 3 | 4 | 7 |
| Histoire et études classiques [bidisc.] | 10 | 6 | 11 | 17 | 1 | | | | 8 | 3 | 10 | 13 | 1 | 3 | 1 | 4 | 1 | 3 | 1 | 4 |
| Informatique [bacc.] | 213 | 188 | 47 | 235 | 83 | 72 | 17 | 89 | 106 | 94 | 23 | 117 | 24 | 21 | 7 | 28 | 24 | 21 | 6 | 27 |
| Informatique [maj.] | 46 | 37 | 9 | 46 | 17 | 8 | 3 | 11 | 28 | 27 | 5 | 32 | 1 | 2 | 1 | 3 | 1 | 2 | 1 | 3 |
| Informatique [min.] | 42 | 32 | 11 | 43 | 21 | 7 | 1 | 8 | 21 | 24 | 10 | 34 | | 1 | | 1 | | 1 | | 1 |
| Informatique appliquée [cert.] | 132 | 82 | 24 | 106 | 27 | 17 | 7 | 24 | 68 | 41 | 9 | 50 | 37 | 24 | 7 | 31 | 37 | 23 | 7 | 30 |
| Langue et culture allemandes [mod.] | 4 | 4 | 3 | 7 | | | | | 3 | 3 | 3 | 6 | 1 | 1 | | 1 | 1 | 1 | | 1 |
| Langue et culture anglaises [mod.] | 12 | 5 | 12 | 17 | 1 | | 1 | 1 | 10 | 5 | 11 | 16 | 1 | | | | 1 | | | |
| Langue et culture arabes [mod.] | 6 | 4 | 4 | 8 | | | | | 6 | 4 | 3 | 7 | | | 1 | 1 | | | 1 | 1 |
| Langue et culture catalanes [mod.] | 1 | 1 | 2 | 3 | | | | | | | 1 | 1 | 1 | 1 | 1 | 2 | 1 | 1 | 1 | 2 |
| Langue et culture chinoises [mod.] | 6 | 2 | 5 | 7 | | | | | 5 | 2 | 5 | 7 | 1 | | | | 1 | | | |
| Langue et culture grecques [mod.] | | 1 | | 1 | | | | | | | | | | 1 | | 1 | | 1 | | 1 |
| Langue et culture hispaniques [mod.] | 9 | 2 | 10 | 12 | | | | | 5 | 2 | 8 | 10 | 4 | | 2 | 2 | 4 | | 2 | 2 |
| Langue et culture italiennes [mod.] | 2 | 3 | 4 | 7 | | | | | 1 | 2 | 2 | 4 | 1 | 1 | 2 | 3 | 1 | 1 | 2 | 3 |
| Langue et culture japonaises [mod.] | 6 | 5 | 5 | 10 | | | | | 6 | 3 | 3 | 6 | | 1 | 2 | 3 | | 1 | 2 | 3 |
| Langue et culture latines [mod.] | 2 | 2 | | 2 | | | | | 2 | 2 | | 2 | | | | | | | | |
| Langue et culture russes [mod.] | 3 | 1 | 1 | 2 | | | | | 3 | | 1 | 1 | | 1 | | 1 | | 1 | | 1 |

PREMIER CYCLE - TRIMESTRE D'HIVER

| FACULTÉS PROGRAMMES | TOTAL DES DEMANDES | | | | REFUS | | | | DÉSISTEMENTS | | | | ADMIS | | | | NOUVEAUX INSCRITS | | | |
|--|--------------------|-----|------|-----|-------|----|------|----|--------------|----|------|----|-------|----|------|----|-------------------|----|------|----|
| | 2010 | | 2011 | | 2010 | | 2011 | | 2010 | | 2011 | | 2010 | | 2011 | | 2010 | | 2011 | |
| | T | H | F | T | T | H | F | T | T | H | F | T | T | H | F | T | T | H | F | T |
| Langue portugaise et cultures lusophones [min.] | 4 | | 2 | 2 | | | 1 | 1 | 2 | | | | 2 | | 1 | 1 | 1 | | | |
| Langue portugaise et cultures lusophones [mod.] | 2 | 2 | 1 | 3 | | | | | 2 | 1 | | 1 | | 1 | 1 | 2 | | 1 | 1 | 2 |
| Linguistique [maj.] | 20 | 6 | 15 | 21 | 1 | | 3 | 3 | 15 | 4 | 10 | 14 | 3 | 2 | 2 | 4 | 3 | 2 | 2 | 4 |
| Linguistique [min.] | 30 | 10 | 13 | 23 | 2 | | 1 | 1 | 17 | 5 | 8 | 13 | 11 | 5 | 4 | 9 | 7 | 5 | 4 | 9 |
| Linguistique et Psychologie [bidisc.] | 42 | 5 | 32 | 37 | 13 | | 8 | 8 | 24 | 4 | 17 | 21 | 5 | 1 | 7 | 8 | 5 | 1 | 7 | 8 |
| Littérature comparée [maj.] | 10 | 2 | 3 | 5 | 1 | | | | 7 | 1 | 1 | 2 | 2 | 1 | 2 | 3 | 2 | 1 | 2 | 3 |
| Littérature comparée [min.] | 5 | 3 | 5 | 8 | | | | | 2 | 3 | 4 | 7 | 3 | | 1 | 1 | 2 | | 1 | 1 |
| Littérature comparée et Philosophie [bidisc.] | 13 | 5 | 7 | 12 | 1 | | | | 8 | 3 | 7 | 10 | 4 | 2 | | 2 | 4 | 2 | | 2 |
| Littératures de langues anglaise et française [bidisc.] | 30 | 6 | 17 | 23 | 5 | 2 | 1 | 3 | 21 | 4 | 14 | 18 | 4 | | 2 | 2 | 3 | | 2 | 2 |
| Littératures de langue française [bacc.] | 85 | 22 | 41 | 63 | 7 | 2 | 4 | 6 | 44 | 16 | 22 | 38 | 34 | 3 | 14 | 17 | 34 | 3 | 14 | 17 |
| Littératures de langue française [maj.] | 18 | 5 | 11 | 16 | 2 | | 2 | 2 | 9 | 5 | 4 | 9 | 7 | | 4 | 4 | 7 | | 4 | 4 |
| Littératures de langue française [min.] | 22 | 6 | 14 | 20 | 4 | | 2 | 2 | 9 | 5 | 8 | 13 | 7 | 1 | 4 | 5 | 7 | 1 | 4 | 5 |
| Littératures de langue française et Linguistique [bidisc.] | 23 | 7 | 20 | 27 | 1 | 1 | 5 | 6 | 16 | 5 | 8 | 13 | 6 | 1 | 7 | 8 | 6 | 1 | 7 | 8 |
| Littératures de langue française et Philosophie [bidisc.] | 18 | 5 | 4 | 9 | 3 | | 1 | 1 | 11 | 5 | 3 | 8 | 4 | | | | 4 | | | |
| Mathématiques [bacc.] | 210 | 105 | 62 | 167 | 31 | 21 | 11 | 32 | 111 | 53 | 28 | 81 | 68 | 30 | 23 | 53 | 68 | 28 | 22 | 50 |
| Mathématiques [maj.] | 21 | 8 | 5 | 13 | 3 | | 2 | 2 | 15 | 6 | 3 | 9 | 3 | 2 | | 2 | 3 | 2 | | 2 |
| Mathématiques [min.] | 53 | 32 | 11 | 43 | 4 | 5 | 3 | 8 | 33 | 21 | 5 | 26 | 16 | 6 | 3 | 9 | 16 | 6 | 3 | 9 |
| Mathématiques et Économie [bidisc.] | 122 | 83 | 41 | 124 | 23 | 14 | 7 | 21 | 85 | 60 | 27 | 87 | 14 | 9 | 7 | 16 | 13 | 9 | 7 | 16 |
| Mathématiques et Informatique [bidisc.] | 92 | 66 | 19 | 85 | 28 | 13 | 4 | 17 | 58 | 47 | 15 | 62 | 6 | 6 | | 6 | 6 | 6 | | 6 |
| Mathématiques et Physique [bidisc.] | 47 | 42 | 16 | 58 | 5 | 12 | 2 | 14 | 33 | 25 | 13 | 38 | 9 | 5 | 1 | 6 | 9 | 5 | 1 | 6 |
| Multimédia [mod.] | 6 | 4 | 1 | 5 | 2 | | | | 4 | 4 | | 4 | | | 1 | 1 | | | 1 | 1 |
| Philosophie [bacc.] | 61 | 36 | 11 | 47 | 3 | 4 | 2 | 6 | 42 | 19 | 7 | 26 | 16 | 13 | 2 | 15 | 16 | 13 | 2 | 15 |
| Philosophie [maj.] | 6 | 7 | 4 | 11 | | 1 | | 1 | 4 | 4 | 1 | 5 | 2 | 2 | 3 | 5 | 2 | 2 | 2 | 4 |
| Philosophie [min.] | 20 | 19 | 14 | 33 | 2 | 1 | | 1 | 11 | 7 | 9 | 16 | 6 | 11 | 5 | 16 | 5 | 9 | 4 | 13 |
| Philosophie et études classiques [bidisc.] | 10 | 3 | 4 | 7 | 1 | | | | 8 | 2 | 4 | 6 | 1 | 1 | | 1 | 1 | 1 | | 1 |
| Physique [bacc.] | 60 | 49 | 13 | 62 | 8 | 6 | | 6 | 34 | 29 | 11 | 40 | 18 | 14 | 2 | 16 | 18 | 14 | 2 | 16 |
| Physique [maj.] | 5 | 5 | 2 | 7 | 2 | 1 | | 1 | 3 | 3 | 1 | 4 | | 1 | 1 | 2 | | 1 | 1 | 2 |
| Physique [min.] | 5 | 17 | 1 | 18 | 1 | 2 | | 2 | 3 | 10 | | 10 | 1 | 5 | 1 | 6 | 1 | 3 | | 3 |

PREMIER CYCLE - TRIMESTRE D'HIVER

| FACULTÉS PROGRAMMES | TOTAL DES DEMANDES | | | | REFUS | | | | DÉSISTEMENTS | | | | ADMIS | | | | NOUVEAUX INSCRITS | | | |
|---|--------------------|------|-----|-----|-------|------|----|----|--------------|------|----|-----|-------|------|----|----|-------------------|------|----|----|
| | 2010 | 2011 | | | 2010 | 2011 | | | 2010 | 2011 | | | 2010 | 2011 | | | 2010 | 2011 | | |
| | T | H | F | T | T | H | F | T | T | H | F | T | T | H | F | T | T | H | F | T |
| Physique et Informatique [bidisc.] | 28 | 28 | 5 | 33 | 9 | 5 | | 5 | 18 | 17 | 5 | 22 | 1 | 6 | | 6 | 1 | 5 | | 5 |
| Programmation [mod.] | 13 | 13 | 4 | 17 | 1 | 2 | 2 | 4 | 11 | 8 | 2 | 10 | 1 | 3 | | 3 | 1 | 3 | | 3 |
| Programme d'accueil en sciences [prop.] | 3 | 10 | 12 | 22 | | 1 | | 1 | 2 | 7 | 12 | 19 | 1 | 1 | | 1 | | 1 | | 1 |
| Psychoéducation [min.] | | | 1 | 1 | | | | | | | 1 | 1 | | | | | | | | |
| Psychologie [bacc.] | 257 | 82 | 226 | 308 | 70 | 25 | 67 | 92 | 106 | 39 | 87 | 126 | 81 | 18 | 71 | 89 | 81 | 18 | 70 | 88 |
| Psychologie [maj.] | 53 | 12 | 54 | 66 | 23 | 4 | 19 | 23 | 23 | 7 | 31 | 38 | 5 | 1 | 4 | 5 | 5 | 1 | 4 | 5 |
| Psychologie [min.] | 124 | 36 | 119 | 155 | 26 | 11 | 26 | 37 | 66 | 22 | 59 | 81 | 32 | 3 | 34 | 37 | 31 | 3 | 32 | 35 |
| Psychologie et Sociologie [bidisc.] | 163 | 50 | 124 | 174 | 13 | 8 | 13 | 21 | 96 | 28 | 63 | 91 | 54 | 14 | 47 | 61 | 54 | 13 | 47 | 60 |
| Relations ethniques [mod.] | 6 | 2 | 5 | 7 | 1 | 1 | | 1 | 3 | 1 | 4 | 5 | 2 | | 1 | 1 | 2 | | 1 | 1 |
| Relations industrielles [bacc.] | 10 | 2 | 3 | 5 | | | | | 2 | | 1 | 1 | 8 | 2 | 2 | 4 | 8 | 2 | 2 | 4 |
| Science politique [bacc.] | 210 | 132 | 97 | 229 | 64 | 28 | 25 | 53 | 113 | 79 | 63 | 142 | 33 | 25 | 7 | 32 | 32 | 23 | 6 | 29 |
| Science politique [maj.] | 55 | 33 | 17 | 50 | 12 | 7 | 6 | 13 | 24 | 17 | 7 | 24 | 18 | 9 | 4 | 13 | 14 | 9 | 4 | 13 |
| Science politique [min.] | 56 | 37 | 32 | 69 | 12 | 8 | 9 | 17 | 29 | 21 | 16 | 37 | 15 | 8 | 6 | 14 | 14 | 3 | 4 | 7 |
| Sciences biologiques [bacc.] | 1 | 81 | 126 | 207 | | 40 | 58 | 98 | | 36 | 53 | 89 | 1 | 5 | 15 | 20 | 1 | 5 | 14 | 19 |
| Sciences biologiques [maj.] | | 9 | 20 | 29 | | 3 | 9 | 12 | | 6 | 9 | 15 | | | 2 | 2 | | | 2 | 2 |
| Sciences biologiques [min.] | | 12 | 35 | 47 | | 8 | 13 | 21 | | 3 | 19 | 22 | | 1 | 3 | 4 | | 1 | 3 | 4 |
| Sciences cognitives [min.] | 21 | 6 | 6 | 12 | 1 | 2 | | 2 | 14 | 1 | 6 | 7 | 6 | 3 | | 3 | 6 | 3 | | 3 |
| Sciences de la communication [bacc.] | 11 | | 4 | 4 | 5 | | 1 | 1 | 3 | | 1 | 1 | 3 | | 2 | 2 | 3 | | 2 | 2 |
| Sciences de la communication [maj.] | | 2 | 1 | 3 | | 1 | | 1 | | | 1 | 1 | | 1 | | 1 | | 1 | | 1 |
| Sciences de la communication [min.] | 1 | | 1 | 1 | | | | | | | | | 1 | | 1 | 1 | 1 | | 1 | 1 |
| Sciences économiques [bacc.] | 352 | 248 | 113 | 361 | 83 | 60 | 33 | 93 | 199 | 132 | 64 | 196 | 70 | 52 | 15 | 67 | 67 | 48 | 15 | 63 |
| Sciences économiques [maj.] | 132 | 72 | 37 | 109 | 13 | 11 | 5 | 16 | 68 | 42 | 20 | 62 | 49 | 17 | 11 | 28 | 43 | 14 | 11 | 25 |
| Sciences économiques [min.] | 104 | 63 | 35 | 98 | 7 | 7 | 3 | 10 | 64 | 38 | 18 | 56 | 33 | 18 | 14 | 32 | 29 | 15 | 13 | 28 |
| Sécurité intérieure [cert.] | 22 | 14 | 3 | 17 | 12 | 6 | 1 | 7 | 8 | 7 | 2 | 9 | 2 | 1 | | 1 | 1 | 1 | | 1 |
| Sociologie [bacc.] | 131 | 57 | 74 | 131 | 13 | 5 | 11 | 16 | 95 | 38 | 56 | 94 | 23 | 14 | 6 | 20 | 23 | 12 | 6 | 18 |
| Sociologie [maj.] | 24 | 15 | 17 | 32 | 4 | 6 | 5 | 11 | 17 | 5 | 9 | 14 | 3 | 4 | 3 | 7 | 3 | 3 | 3 | 6 |
| Sociologie [min.] | 46 | 25 | 36 | 61 | 1 | | 5 | 5 | 29 | 19 | 25 | 44 | 15 | 5 | 6 | 11 | 14 | 5 | 5 | 10 |
| Traduction [bacc.] | 149 | 37 | 98 | 135 | 34 | 6 | 19 | 25 | 62 | 19 | 42 | 61 | 53 | 12 | 34 | 46 | 52 | 12 | 34 | 46 |
| Traduction [maj.] | 43 | 14 | 34 | 48 | 12 | 2 | 4 | 6 | 20 | 9 | 20 | 29 | 11 | 3 | 10 | 13 | 11 | 3 | 9 | 12 |

PREMIER CYCLE - TRIMESTRE D'HIVER

| FACULTÉS PROGRAMMES | TOTAL DES DEMANDES | | | | REFUS | | | | DÉSISTEMENTS | | | | ADMIS | | | | NOUVEAUX INSCRITS | | | |
|--|--------------------|------|------|------|-------|-----|------|------|--------------|------|------|------|-------|------|------|------|-------------------|-----|------|------|
| | 2010 | | 2011 | | 2010 | | 2011 | | 2010 | | 2011 | | 2010 | | 2011 | | 2010 | | 2011 | |
| | T | H | F | T | T | H | F | T | T | H | F | T | T | H | F | T | T | H | F | T |
| TOTAL DE LA FACULTÉ | 6921 | 3797 | 3921 | 7718 | 1040 | 691 | 646 | 1337 | 3723 | 2069 | 2032 | 4101 | 2138 | 1002 | 1214 | 2216 | 2054 | 938 | 1171 | 2109 |
| ÉDUCATION PERMANENTE | | | | | | | | | | | | | | | | | | | | |
| Accès études universitaires [prop.] | 44 | 10 | 7 | 17 | | | | | 12 | 1 | | 1 | 32 | 9 | 7 | 16 | 31 | 9 | 5 | 14 |
| Communication appliquée [cert.] | 149 | 57 | 101 | 158 | 38 | 10 | 24 | 34 | 83 | 37 | 52 | 89 | 28 | 10 | 25 | 35 | 25 | 10 | 21 | 31 |
| Criminologie [cert.] | 194 | 64 | 149 | 213 | 41 | 12 | 29 | 41 | 57 | 30 | 42 | 72 | 96 | 22 | 78 | 100 | 89 | 21 | 68 | 89 |
| Droit [cert.] | 275 | 116 | 163 | 279 | 70 | 32 | 33 | 65 | 86 | 30 | 43 | 73 | 118 | 54 | 87 | 141 | 112 | 50 | 78 | 128 |
| Droit [micro.] | 67 | 35 | 39 | 74 | 16 | 9 | 10 | 19 | 37 | 19 | 25 | 44 | 14 | 7 | 4 | 11 | 13 | 7 | 4 | 11 |
| Études individualisées (arts) [cert.] | 60 | 21 | 62 | 83 | 4 | | 1 | 1 | 18 | 8 | 21 | 29 | 38 | 13 | 40 | 53 | 32 | 9 | 34 | 43 |
| Études individualisées (sciences) [cert.] | 25 | 5 | 26 | 31 | 1 | | | | 2 | | | | 22 | 5 | 26 | 31 | 17 | 1 | 20 | 21 |
| | | 1 | | 1 | | | | | | | | | | 1 | | 1 | | 1 | | 1 |
| Français, langue seconde pour non francophones [cert.] | 87 | 34 | 92 | 126 | 2 | | | | 19 | 11 | 15 | 26 | 65 | 23 | 76 | 99 | 60 | 23 | 70 | 93 |
| Gérontologie [cert.] | 107 | 13 | 129 | 142 | 2 | | 6 | 6 | 26 | 3 | 24 | 27 | 79 | 10 | 99 | 109 | 70 | 9 | 94 | 103 |
| Gestion appliquée à la police et à la sécurité [cert.] | 39 | 37 | 20 | 57 | 9 | 9 | 2 | 11 | 12 | 9 | 12 | 21 | 18 | 19 | 6 | 25 | 18 | 18 | 6 | 24 |
| Gestion philanthropique [cert.] | 42 | 9 | 32 | 41 | 6 | | | | 8 | 1 | 11 | 12 | 28 | 8 | 21 | 29 | 26 | 6 | 17 | 23 |
| Intervention auprès des jeunes : fondements et pratiques [cert.] | 130 | 36 | 124 | 160 | 24 | 8 | 25 | 33 | 54 | 14 | 50 | 64 | 52 | 14 | 48 | 62 | 43 | 11 | 39 | 50 |
| Intervention en déficience intellectuelle [cert.] | 51 | 8 | 42 | 50 | 12 | 3 | 9 | 12 | 17 | 3 | 18 | 21 | 22 | 2 | 15 | 17 | 19 | 2 | 12 | 14 |
| Journalisme [cert.] | 82 | 40 | 66 | 106 | 12 | 7 | 8 | 15 | 43 | 25 | 30 | 55 | 27 | 8 | 28 | 36 | 23 | 7 | 26 | 33 |
| Petite enfance et famille : intervention précoce [cert.] | 178 | 3 | 246 | 249 | 31 | 2 | 28 | 30 | 48 | | 74 | 74 | 98 | 1 | 144 | 145 | 97 | 1 | 140 | 141 |
| Publicité [cert.] | 145 | 82 | 92 | 174 | 23 | 17 | 8 | 25 | 67 | 38 | 49 | 87 | 55 | 27 | 35 | 62 | 55 | 27 | 34 | 61 |
| Rédaction [cert.] | 62 | 16 | 52 | 68 | 6 | | 5 | 5 | 27 | 9 | 23 | 32 | 29 | 7 | 24 | 31 | 28 | 7 | 21 | 28 |
| Rédaction: principes et pratique [mod.] | 5 | 1 | 11 | 12 | | | | | 2 | | 8 | 8 | 3 | 1 | 3 | 4 | 3 | 1 | 3 | 4 |
| Relations industrielles [cert.] | 172 | 82 | 113 | 195 | 32 | 23 | 13 | 36 | 64 | 24 | 40 | 64 | 76 | 34 | 59 | 93 | 62 | 27 | 52 | 79 |
| Relations publiques [cert.] | 131 | 49 | 100 | 149 | 33 | 14 | 21 | 35 | 71 | 28 | 59 | 87 | 27 | 7 | 20 | 27 | 24 | 6 | 18 | 24 |

PREMIER CYCLE - TRIMESTRE D'HIVER

| FACULTÉS PROGRAMMES | TOTAL DES DEMANDES | | | | REFUS | | | | DÉSISTEMENTS | | | | ADMIS | | | | NOUVEAUX INSCRITS | | | |
|---|--------------------|------------|-------------|-------------|------------|------------|------------|------------|--------------|------------|------------|-------------|-------------|------------|-------------|-------------|-------------------|------------|------------|-------------|
| | 2010 | | 2011 | | 2010 | | 2011 | | 2010 | | 2011 | | 2010 | | 2011 | | 2010 | | 2011 | |
| | T | H | F | T | T | H | F | T | T | H | F | T | T | H | F | T | T | H | F | T |
| Santé et sécurité du travail [cert.] | 120 | 36 | 88 | 124 | 8 | 4 | 12 | 16 | 44 | 16 | 34 | 50 | 67 | 16 | 42 | 58 | 58 | 14 | 40 | 54 |
| Toxicomanies : prévention et réadaptation [cert.] | 149 | 51 | 111 | 162 | 9 | 6 | 5 | 11 | 63 | 19 | 54 | 73 | 77 | 26 | 51 | 77 | 70 | 25 | 45 | 70 |
| Traduction I [cert.] | 122 | 26 | 69 | 95 | 17 | 5 | 8 | 13 | 50 | 12 | 26 | 38 | 55 | 9 | 35 | 44 | 51 | 9 | 32 | 41 |
| Traduction II [cert.] | 24 | 6 | 17 | 23 | 2 | 1 | 1 | 2 | | 1 | 2 | 3 | 22 | 4 | 14 | 18 | 18 | 4 | 11 | 15 |
| Violence, victimes et société [cert.] | 86 | 17 | 86 | 103 | 15 | 3 | 11 | 14 | 46 | 9 | 35 | 44 | 25 | 5 | 39 | 44 | 22 | 5 | 34 | 39 |
| TOTAL DE LA FACULTÉ | 2546 | 855 | 2037 | 2892 | 413 | 165 | 259 | 424 | 956 | 347 | 747 | 1094 | 1173 | 342 | 1026 | 1368 | 1066 | 310 | 924 | 1234 |
| KINÉSIOLOGIE | | | | | | | | | | | | | | | | | | | | |
| Kinésiologie [bacc.] | 182 | 79 | 99 | 178 | 81 | 31 | 33 | 64 | 62 | 25 | 40 | 65 | 39 | 23 | 26 | 49 | 39 | 23 | 26 | 49 |
| Kinésiologie [maj.] | 21 | 12 | 12 | 24 | 4 | 2 | 3 | 5 | 15 | 9 | 8 | 17 | 2 | 1 | 1 | 2 | 2 | 1 | 1 | 2 |
| Kinésiologie [min.] | 67 | 26 | 31 | 57 | 21 | 11 | 10 | 21 | 35 | 12 | 18 | 30 | 11 | 3 | 3 | 6 | 11 | 3 | 3 | 6 |
| TOTAL DU DÉPARTEMENT | 270 | 117 | 142 | 259 | 106 | 44 | 46 | 90 | 112 | 46 | 66 | 112 | 52 | 27 | 30 | 57 | 52 | 27 | 30 | 57 |
| MUSIQUE | | | | | | | | | | | | | | | | | | | | |
| Musique général [bacc.] | | 1 | | 1 | | | | | | | | | | 1 | | 1 | | | | |
| Musique Interpretation chant [bacc.] | | | 1 | 1 | | | | | | | | | | | 1 | 1 | | | 1 | 1 |
| Musique, art et société [min] | 14 | 6 | 9 | 15 | 5 | 1 | 2 | 3 | 7 | 5 | 5 | 10 | 2 | | 2 | 2 | 1 | | 2 | 2 |
| Musiques numériques [maj] | 14 | 19 | 7 | 26 | 6 | 4 | 1 | 5 | 2 | 6 | 2 | 8 | 6 | 9 | 4 | 13 | 5 | 9 | 3 | 12 |
| Musiques numériques [min] | 19 | 22 | 6 | 28 | 4 | 2 | 1 | 3 | 6 | 9 | 2 | 11 | 9 | 11 | 3 | 14 | 8 | 10 | 3 | 13 |
| TOTAL DE LA FACULTÉ | 47 | 48 | 23 | 71 | 15 | 7 | 4 | 11 | 15 | 20 | 9 | 29 | 17 | 21 | 10 | 31 | 14 | 19 | 9 | 28 |
| OPTOMÉTRIE | | | | | | | | | | | | | | | | | | | | |
| Actualisation de formation en optométrie [bacc.] | | 1 | | 1 | | | | | | | | | | 1 | | 1 | | | 1 | 1 |
| TOTAL DE L'ÉCOLE | | 1 | | 1 | | | | | | | | | | 1 | | 1 | | | 1 | 1 |

PREMIER CYCLE - TRIMESTRE D'HIVER

| FACULTÉS PROGRAMMES | TOTAL DES DEMANDES | | | | REFUS | | | | DÉSISTEMENTS | | | | ADMIS | | | | NOUVEAUX INSCRITS | | | |
|--|--------------------|-----------|-----------|------------|----------|----------|----------|----------|--------------|-----------|-----------|-----------|-----------|-----------|-----------|-----------|-------------------|-----------|-----------|-----------|
| | 2010 | | 2011 | | 2010 | | 2011 | | 2010 | | 2011 | | 2010 | | 2011 | | 2010 | | 2011 | |
| | T | H | F | T | T | H | F | T | T | H | F | T | T | H | F | T | T | H | F | T |
| SCIENCES DE L'ÉDUCATION | | | | | | | | | | | | | | | | | | | | |
| Qualification en enseignement [cert.] | 43 | 25 | 38 | 63 | 1 | 2 | 2 | 4 | 16 | 8 | 9 | 17 | 26 | 15 | 27 | 42 | 26 | 14 | 27 | 41 |
| Qualification en enseignement [mod.] | 85 | 29 | 44 | 73 | | 2 | 2 | 4 | 14 | 10 | 6 | 16 | 71 | 17 | 36 | 53 | 63 | 15 | 36 | 51 |
| TOTAL DE LA FACULTÉ | 128 | 54 | 82 | 136 | 1 | 4 | 4 | 8 | 30 | 18 | 15 | 33 | 97 | 32 | 63 | 95 | 89 | 29 | 63 | 92 |
| SCIENCES INFIRMIÈRES | | | | | | | | | | | | | | | | | | | | |
| Sc. infirmières - urgence [mod.] | | | 2 | 2 | | | | | | | 2 | 2 | | | | | | | | |
| Sc. infirmières (formation intégrée DEC-BAC) [bacc.] | 1 | 1 | 1 | 2 | | 1 | | 1 | | | | | 1 | | 1 | 1 | 1 | | 1 | 1 |
| Sc. infirmières : profession et santé [min.] | 1 | 1 | 2 | 3 | 1 | | | | | | | | | 1 | 2 | 3 | | 1 | 2 | 3 |
| Sc. infirmières : pratique infirmière 1 [min.] | | | 1 | 1 | | | | | | | | | | | 1 | 1 | | | 1 | 1 |
| Sc. Infirmières Éval. Santé interv. [mod.] | 14 | 7 | 18 | 25 | 5 | 3 | 4 | 7 | 6 | 2 | 7 | 9 | 3 | 2 | 7 | 9 | 1 | 2 | 5 | 7 |
| TOTAL DE LA FACULTÉ | 16 | 9 | 24 | 33 | 6 | 4 | 4 | 8 | 6 | 2 | 9 | 11 | 4 | 3 | 11 | 14 | 2 | 3 | 9 | 12 |
| THÉOLOGIE ET SCIENCES DES RELIGIONS | | | | | | | | | | | | | | | | | | | | |
| Animation spirituelle et engagement communautaire [maj.] | 5 | 1 | 3 | 4 | | | | | 3 | 1 | 3 | 4 | 2 | | | | 2 | | | |
| Animation spirituelle et engagement communautaire [min.] | 3 | 4 | 1 | 5 | | | | | 1 | 4 | | 4 | 1 | | 1 | 1 | | | | |
| Études islamiques [min.] | 7 | 4 | 4 | 8 | | 1 | 2 | 3 | 5 | 2 | 2 | 4 | 2 | 1 | | 1 | 2 | 1 | | 1 |
| Sciences des religions appliquées [maj.] | 3 | 1 | 1 | 2 | | | | | 2 | | | | 1 | 1 | 1 | 2 | 1 | 1 | 1 | 2 |
| Sciences des religions [cert.] | 6 | 3 | 6 | 9 | | | | | 4 | 3 | 5 | 8 | 2 | | 1 | 1 | 2 | | 1 | 1 |
| Sciences religieuses [min.] | 16 | 2 | 6 | 8 | 1 | | | | 10 | 1 | 3 | 4 | 5 | 1 | 3 | 4 | 5 | 1 | 3 | 4 |
| Théologie [bacc.] | 24 | 7 | 9 | 16 | 1 | | | | 12 | 5 | 6 | 11 | 11 | 2 | 3 | 5 | 11 | 2 | 3 | 5 |
| Théologie [maj.] | 7 | | 2 | 2 | | | | | 4 | | 1 | 1 | 3 | | 1 | 1 | 3 | | | |
| Théologie pratique [cert.] | 8 | | 5 | 5 | 1 | | | | 6 | | 4 | 4 | 1 | | 1 | 1 | 1 | | | |
| TOTAL DE LA FACULTÉ | 79 | 22 | 37 | 59 | 3 | 1 | 2 | 3 | 47 | 16 | 24 | 40 | 28 | 5 | 11 | 16 | 27 | 5 | 8 | 13 |

PREMIER CYCLE - TRIMESTRE D'HIVER

| FACULTÉS PROGRAMMES | TOTAL DES DEMANDES | | | | REFUS | | | | DÉSISTEMENTS | | | | ADMIS | | | | NOUVEAUX INSCRITS | | | |
|--|--------------------|------------|------------|------------|-----------|-----------|-----------|-----------|--------------|-----------|------------|------------|------------|-----------|------------|------------|-------------------|-----------|------------|------------|
| | 2010 | | 2011 | | 2010 | | 2011 | | 2010 | | 2011 | | 2010 | | 2011 | | 2010 | | 2011 | |
| | T | H | F | T | T | H | F | T | T | H | F | T | T | H | F | T | T | H | F | T |
| PROGRAMMES MULTIFACULTAIRES (F.E.P.) | | | | | | | | | | | | | | | | | | | | |
| FAS-FEP | | | | | | | | | | | | | | | | | | | | |
| Bureautique [mod.] | 12 | 4 | 19 | 23 | 1 | | | | 6 | 2 | 16 | 18 | 5 | 2 | 3 | 5 | 5 | 2 | 3 | 5 |
| Coopération internationale [cert.] | 116 | 42 | 71 | 113 | 12 | 6 | 9 | 15 | 49 | 23 | 29 | 52 | 52 | 13 | 33 | 46 | 42 | 11 | 29 | 40 |
| Initiation à la programmation [mod.] | 20 | 9 | 5 | 14 | 1 | 1 | | 1 | 12 | 6 | 3 | 9 | 7 | 2 | 2 | 4 | 7 | 2 | 2 | 4 |
| Initiation au multimédia [mod.] | 26 | 13 | 6 | 19 | 2 | | | | 16 | 9 | | 9 | 8 | 4 | 6 | 10 | 8 | 3 | 6 | 9 |
| Programmation internet [mod.] | 28 | 22 | 12 | 34 | 2 | | | | 15 | 13 | 9 | 22 | 11 | 9 | 3 | 12 | 10 | 9 | 2 | 11 |
| Santé mentale : fondements et pratiques d'intervention [cert.] | 125 | 10 | 94 | 104 | 26 | 2 | 8 | 10 | 51 | 7 | 51 | 58 | 48 | 1 | 33 | 34 | 47 | 1 | 31 | 32 |
| FEP-MÉDECINE | | | | | | | | | | | | | | | | | | | | |
| Gestion des services de santé et des services sociaux [cert.] | 99 | 25 | 66 | 91 | 18 | 10 | 12 | 22 | 35 | 7 | 27 | 34 | 46 | 8 | 27 | 35 | 40 | 8 | 23 | 31 |
| Gestion des services de santé et des services sociaux [mod.] | 17 | 5 | 15 | 20 | 3 | 3 | 1 | 4 | 9 | 2 | 8 | 10 | 5 | | 6 | 6 | 5 | | 6 | 6 |
| FEP-MÉDECINE-FSI | | | | | | | | | | | | | | | | | | | | |
| Santé communautaire [cert.] | 65 | 10 | 50 | 60 | 8 | 5 | 10 | 15 | 27 | 2 | 18 | 20 | 30 | 3 | 22 | 25 | 29 | 3 | 18 | 21 |
| TOTAL MULTIFACULTAIRES | 508 | 140 | 338 | 478 | 73 | 27 | 40 | 67 | 220 | 71 | 161 | 232 | 212 | 42 | 135 | 177 | 193 | 39 | 120 | 159 |
| UNIVERSITÉ DE MONTRÉAL | | | | | | | | | | | | | | | | | | | | |
| Baccalauréat en sciences de la santé | | | 1 | 1 | | | | | | | | | | | 1 | 1 | | | | |
| Baccalauréat es sciences | 3 | | 1 | 1 | | | | | | | | | 3 | | 1 | 1 | | | | |
| Étudiants visiteurs | 1 | 1 | 1 | 2 | | | 1 | 1 | | 1 | | 1 | 1 | | | | 1 | | | |
| Majeur | 2 | | 1 | 1 | | | | | | | | | 2 | | 1 | 1 | | | | |
| Mineur [min.] | 1 | | 1 | 1 | | | | | | | | | 1 | | 1 | 1 | | | | |
| Programmes d'échanges | 102 | 45 | 75 | 120 | 9 | 4 | 9 | 13 | 12 | 4 | 7 | 11 | 81 | 37 | 59 | 96 | 81 | 37 | 59 | 96 |

PREMIER CYCLE - TRIMESTRE D'HIVER

| FACULTÉS PROGRAMMES | TOTAL DES DEMANDES | | | | REFUS | | | | DÉSISTEMENTS | | | | ADMIS | | | | NOUVEAUX INSCRITS | | | |
|-------------------------------|--------------------|-------------|-------------|--------------|-------------|------------|-------------|-------------|--------------|-------------|-------------|-------------|-------------|-------------|-------------|-------------|-------------------|-------------|-------------|-------------|
| | 2010 | 2011 | | | 2010 | 2011 | | | 2010 | 2011 | | | 2010 | 2011 | | | 2010 | 2011 | | |
| | T | H | F | T | T | H | F | T | T | H | F | T | T | H | F | T | T | H | F | T |
| TOTAL ÉCHANGES & VISITEURS | 109 | 46 | 80 | 126 | 9 | 4 | 10 | 14 | 12 | 5 | 7 | 12 | 88 | 37 | 63 | 100 | 82 | 37 | 59 | 96 |
| TOTAL DU PREMIER CYCLE | 10693 | 5098 | 6694 | 11792 | 1675 | 947 | 1015 | 1962 | 5154 | 2603 | 3079 | 5682 | 3835 | 1512 | 2564 | 4076 | 3605 | 1408 | 2394 | 3802 |

Légende : *bidisc.*: baccalauréat spécialisé bidisciplinaire; *cert.*: certificat; *maj.*: majeur; *micro.*: microprogramme; *min.*: mineur; *mod.*: module; *spéc.*: baccalauréat spécialisé

- Le total des nouvelles inscriptions comprend les étudiants ayant réussi l'année préparatoire et les attestations (majeur, B. sciences santé, etc.) émises par équivalence

* Les programmes multifacultaires sont gérés par la Faculté de l'éducation permanente

PREMIER CYCLE - TRIMESTRE D'HIVER

RÉPARTITIONS DES CANDIDATS AUTORISÉS À S'INSCRIRE

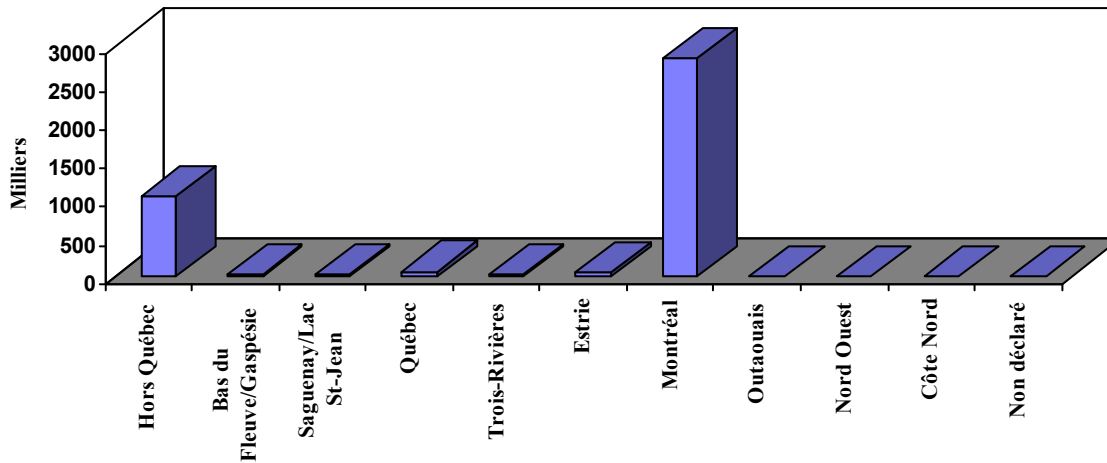
VARIABLES

| <u>Région administrative</u> | | <u>Âge</u> | | <u>Langue d'usage</u> | | <u>Statut au Canada</u> | |
|------------------------------|-------------|----------------|-------------|-----------------------|-------------|-------------------------|-------------|
| Hors Québec | 1034 | -18 | 3 | Français | 3593 | Citoyen canadien | 2811 |
| Bas du Fleuve/Gaspésie | 16 | 18-19 | 159 | Anglais | 105 | Résident permanent | 745 |
| Saguenay/Lac St-Jean | 14 | 20-24 | 1835 | Autre | 378 | Permis/Visa | 510 |
| Québec | 65 | 25-29 | 758 | TOTAL : | 4076 | Autre | 10 |
| Trois-Rivières | 33 | 30-34 | 497 | | | TOTAL : | 4076 |
| Estrie | 51 | 35-39 | 353 | | | | |
| Montréal | 2834 | 40-44 | 233 | | | | |
| Outaouais | 8 | 45+ | 238 | <u>Sexe</u> | | | |
| Nord Ouest | 12 | TOTAL : | 4076 | Masculin | 1512 | | |
| Côte Nord | 0 | | | Féminin | 2564 | | |
| Non déclaré | 9 | | | TOTAL : | 4076 | | |
| TOTAL : | 4076 | | | | | | |

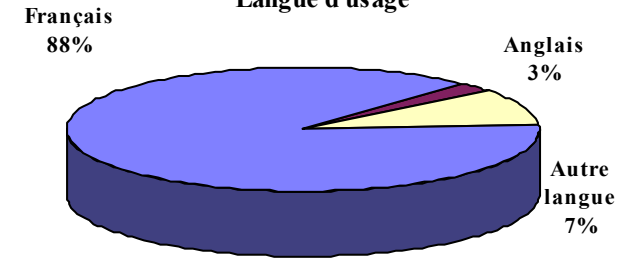
PREMIER CYCLE - TRIMESTRE D'HIVER

RÉPARTITIONS DES CANDIDATS AUTORISÉS À S'INSCRIRE

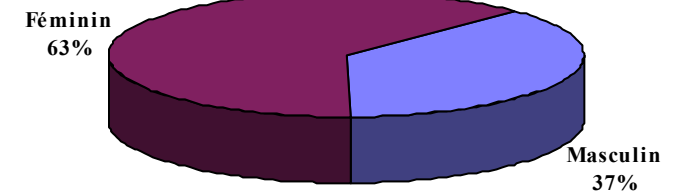
Région administrative



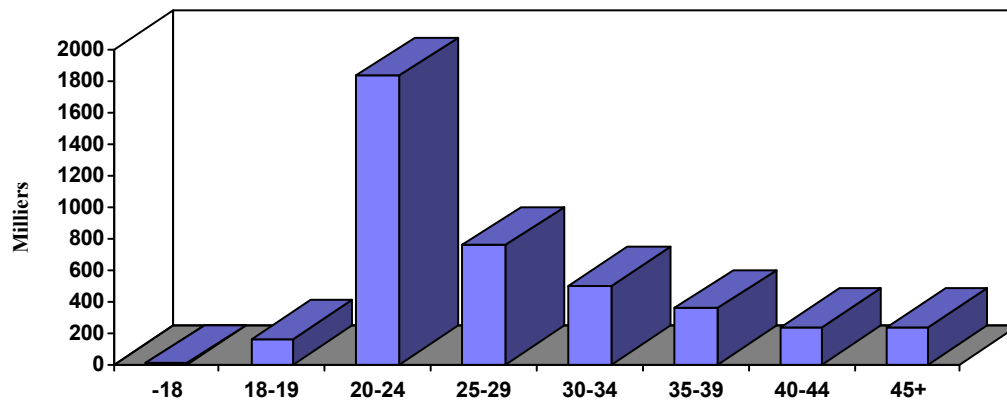
Langue d'usage



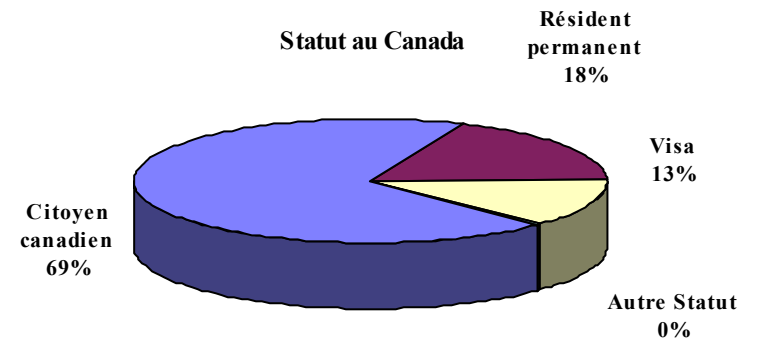
Sexe



Âge



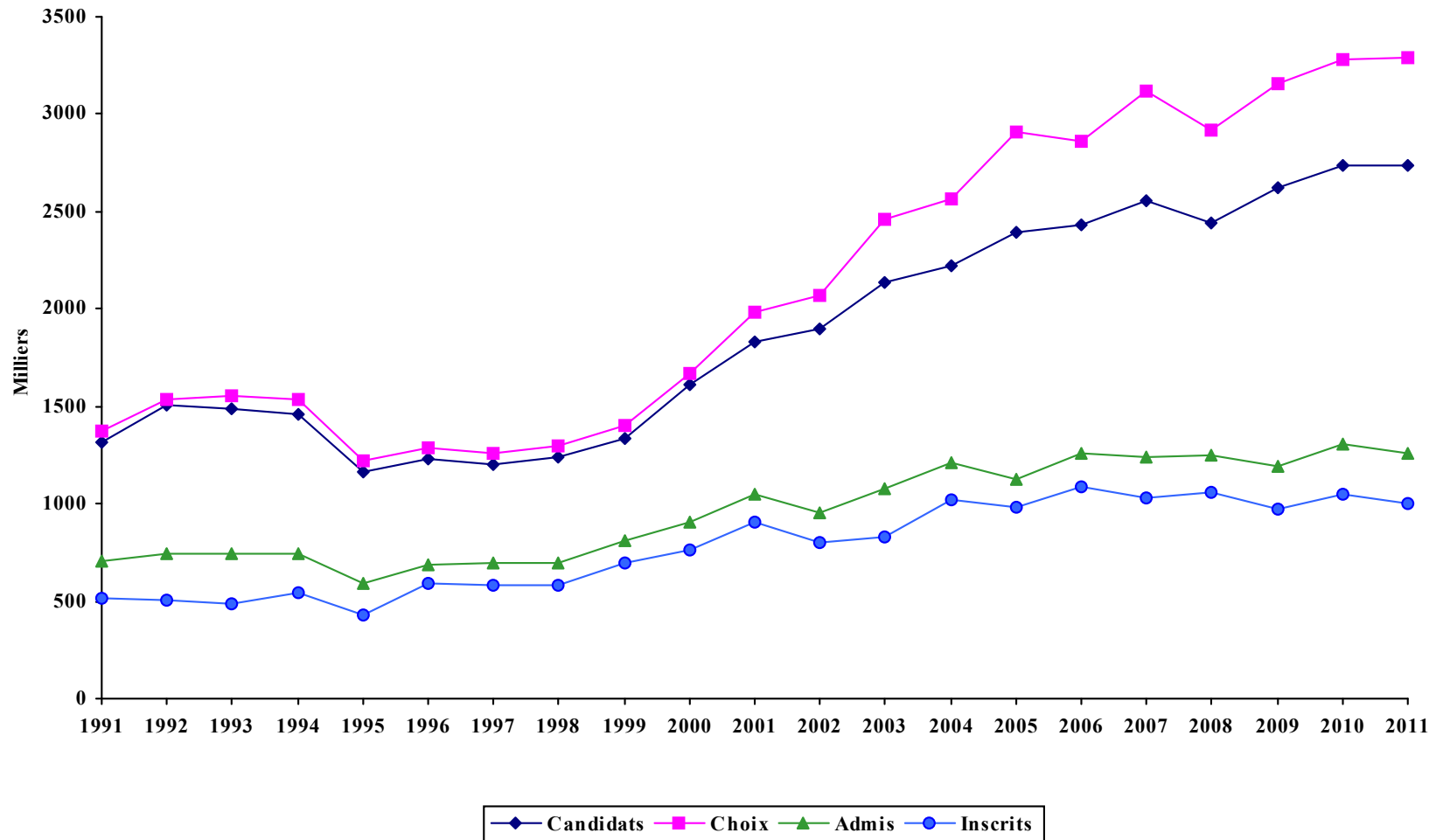
Statut au Canada



CYCLES SUPÉRIEURS - TRIMESTRE D'HIVER

| ANNÉES | CANDIDATS | CHOIX DE PROGRAMME | | CANDIDATS ADMIS | | CANDIDATS INSCRITS | | |
|--------|-----------|--------------------|-----------------|-----------------|-----------------|--------------------|-----------------|-------------|
| | | Choix | N. Par candidat | NOMBRE | % des candidats | NOMBRE | % des candidats | % des admis |
| 1991 | 1312 | 1369 | 1,04 | 707 | 54% | 519 | 40% | 73% |
| 1992 | 1506 | 1539 | 1,02 | 745 | 49% | 505 | 34% | 68% |
| 1993 | 1486 | 1550 | 1,04 | 742 | 50% | 484 | 33% | 65% |
| 1994 | 1462 | 1536 | 1,05 | 748 | 51% | 542 | 37% | 72% |
| 1995 | 1168 | 1216 | 1,04 | 592 | 51% | 433 | 37% | 73% |
| 1996 | 1234 | 1286 | 1,04 | 684 | 55% | 589 | 48% | 86% |
| 1997 | 1206 | 1260 | 1,04 | 697 | 58% | 586 | 49% | 84% |
| 1998 | 1239 | 1297 | 1,05 | 693 | 56% | 577 | 47% | 83% |
| 1999 | 1338 | 1405 | 1,05 | 806 | 60% | 697 | 52% | 86% |
| 2000 | 1608 | 1672 | 1,04 | 904 | 56% | 759 | 47% | 84% |
| 2001 | 1833 | 1980 | 1,08 | 1048 | 57% | 904 | 49% | 86% |
| 2002 | 1902 | 2071 | 1,09 | 955 | 50% | 804 | 42% | 84% |
| 2003 | 2136 | 2463 | 1,15 | 1075 | 50% | 833 | 39% | 77% |
| 2004 | 2219 | 2562 | 1,15 | 1209 | 54% | 1022 | 46% | 85% |
| 2005 | 2397 | 2912 | 1,21 | 1130 | 47% | 980 | 41% | 87% |
| 2006 | 2436 | 2864 | 1,18 | 1258 | 52% | 1084 | 44% | 86% |
| 2007 | 2560 | 3119 | 1,22 | 1242 | 49% | 1027 | 40% | 83% |
| 2008 | 2446 | 2920 | 1,19 | 1249 | 51% | 1055 | 43% | 84% |
| 2009 | 2618 | 3152 | 1,20 | 1196 | 46% | 975 | 37% | 82% |
| 2010 | 2737 | 3279 | 1,20 | 1304 | 48% | 1051 | 38% | 81% |
| 2011 | 2741 | 3290 | 1,20 | 1257 | 46% | 1005 | 37% | 80% |

CYCLES SUPÉRIEURS - TRIMESTRE D'HIVER



CYCLES SUPÉRIEURS - TRIMESTRE D'HIVER

| FACULTÉS PROGRAMMES | TOTAL DES DEMANDES | | | | REFUS | | | | DÉSISTEMENTS | | | | ADMIS | | | | NOUVEAUX INSCRITS | | | | |
|---|---------------------|-----|------|----|-------|----|------|----|--------------|----|------|----|-------|----|------|----|-------------------|----|------|----|----|
| | 2010 | | 2011 | | 2010 | | 2011 | | 2010 | | 2011 | | 2010 | | 2011 | | 2010 | | 2011 | | |
| | T | H | F | T | T | H | F | T | T | H | F | T | T | H | F | T | T | H | F | T | |
| <u>AMÉNAGEMENT</u> | | | | | | | | | | | | | | | | | | | | | |
| Aménagement | Ph.D. | 15 | 7 | 7 | 14 | 1 | 1 | | 1 | 9 | 5 | 4 | 9 | 4 | 1 | 2 | 3 | 4 | | 1 | 1 |
| M.Sc.A. (Aménagement) | M.Sc. | 45 | 26 | 25 | 51 | 4 | 6 | 5 | 11 | 16 | 14 | 8 | 22 | 19 | 6 | 9 | 15 | 18 | 6 | 7 | 13 |
| Montage et gestion de projets d'aménagement | D.É.S.S. | 29 | 20 | 11 | 31 | 1 | 6 | 4 | 10 | 14 | 8 | 3 | 11 | 8 | 4 | 3 | 7 | 7 | 3 | 2 | 5 |
| Urbanisme | M.Urb. | 52 | 20 | 21 | 41 | 18 | 7 | 6 | 13 | 13 | 8 | 6 | 14 | 21 | 5 | 9 | 14 | 19 | 5 | 8 | 13 |
| Total 2e cycle | | 126 | 66 | 57 | 123 | 23 | 19 | 15 | 34 | 43 | 30 | 17 | 47 | 48 | 15 | 21 | 36 | 44 | 14 | 17 | 31 |
| Total 3e cycle | | 15 | 7 | 7 | 14 | 1 | 1 | | 1 | 9 | 5 | 4 | 9 | 4 | 1 | 2 | 3 | 4 | | 1 | 1 |
| TOTAL DE LA FACULTÉ | | 141 | 73 | 64 | 137 | 24 | 20 | 15 | 35 | 52 | 35 | 21 | 56 | 52 | 16 | 23 | 39 | 48 | 14 | 18 | 32 |
| <u>ARTS ET SCIENCES</u> | | | | | | | | | | | | | | | | | | | | | |
| Administration sociale | D.É.S.S. | 40 | 16 | 11 | 27 | 11 | 7 | 3 | 10 | 15 | 3 | 3 | 6 | 14 | 6 | 5 | 11 | 12 | 6 | 3 | 9 |
| | Micro. | 18 | 7 | 3 | 10 | 4 | 1 | 2 | 3 | 7 | 4 | | 4 | 7 | 2 | 1 | 3 | 7 | 1 | 1 | 2 |
| Analyse criminologique | Micro. | 7 | 3 | 3 | 6 | 3 | 2 | 2 | 4 | 2 | | 1 | 1 | 2 | 1 | | 1 | 2 | 1 | | 1 |
| Anthropologie | M.Sc. | 17 | 13 | 10 | 23 | 1 | 2 | | 2 | 8 | 5 | 3 | 8 | 8 | 6 | 7 | 13 | 7 | 5 | 6 | 11 |
| Chimie | M.Sc. | 38 | 20 | 12 | 32 | 8 | 8 | 1 | 9 | 13 | 6 | 9 | 15 | 17 | 6 | 2 | 8 | 15 | 6 | 1 | 7 |
| | Ph.D. | 20 | 18 | 9 | 27 | 1 | 4 | 1 | 5 | 15 | 8 | 4 | 12 | 4 | 6 | 4 | 10 | | 5 | 3 | 8 |
| Communication | Ph.D. | 2 | | 1 | 1 | | | | | 1 | | | | 1 | | 1 | 1 | 1 | | 1 | 1 |
| Communication dans les organisations en changement | Micro. | 6 | 3 | 7 | 10 | 2 | 2 | | 2 | 2 | 1 | 1 | 2 | 2 | | 6 | 6 | 1 | | 3 | 3 |
| Criminologie | M.Sc. | 1 | | 1 | 1 | | | | | | | | | 1 | | 1 | 1 | 1 | | 1 | 1 |
| Démographie | M.Sc. | 9 | 3 | 5 | 8 | 2 | 1 | 2 | 3 | 3 | 2 | 1 | 3 | 4 | | 2 | 2 | 3 | | 2 | 2 |
| | Ph.D. | 3 | 1 | 1 | 2 | | | | | 3 | 1 | | 1 | | | 1 | 1 | | | 1 | 1 |
| Environnement et développement durable | D.É.S.S. | | 1 | 2 | 3 | | | | | | 1 | 1 | 2 | | | 1 | 1 | | | | |
| Études allemandes | M.A. | 4 | 1 | 2 | 3 | | 1 | | 1 | 2 | | 1 | 1 | 2 | | 1 | 1 | 2 | | 1 | 1 |
| Études allemandes dans le contexte européen | Diplôme européen | 1 | 3 | 1 | 4 | | | | | 1 | 1 | | 1 | | 2 | 1 | 3 | | 2 | | 2 |

CYCLES SUPÉRIEURS - TRIMESTRE D'HIVER

| FACULTÉS PROGRAMMES | | TOTAL DES DEMANDES | | | | REFUS | | | | DÉSISTEMENTS | | | | ADMIS | | | | NOUVEAUX INSCRITS | | | |
|---|----------|--------------------|----|------|----|-------|----|------|----|--------------|----|------|----|-------|----|------|----|-------------------|----|------|----|
| | | 2010 | | 2011 | | 2010 | | 2011 | | 2010 | | 2011 | | 2010 | | 2011 | | 2010 | | 2011 | |
| | | T | H | F | T | T | H | F | T | T | H | F | T | T | H | F | T | T | H | F | T |
| Études anglaises | M.A. | 14 | 6 | 20 | 26 | 4 | 2 | 11 | 13 | 8 | 3 | 6 | 9 | 2 | 1 | 3 | 4 | 2 | 1 | 2 | 3 |
| | Ph.D. | 5 | 4 | 2 | 6 | 2 | | | | 3 | 3 | 2 | 5 | | 1 | | 1 | | | | |
| Études cinématographiques | M.A. | 15 | 7 | 8 | 15 | 3 | | 2 | 2 | 9 | 5 | 5 | 10 | 3 | 2 | 1 | 3 | 2 | 2 | 1 | 3 |
| | Ph.D. | 4 | 4 | 1 | 5 | | 1 | | 1 | 1 | 1 | | 1 | 2 | 2 | 1 | 3 | 2 | 2 | 1 | 3 |
| Études classiques | M.A. | 2 | 1 | 1 | 2 | | | 1 | 1 | 2 | 1 | | 1 | | | | | | | | |
| Études hispaniques | M.A. | 9 | 4 | 4 | 8 | 1 | | 1 | 1 | 3 | 3 | 2 | 5 | 5 | 1 | 1 | 2 | 5 | 1 | 1 | 2 |
| Études internationales | M.Sc. | 9 | 3 | 6 | 9 | | 1 | | 1 | 5 | | 1 | 1 | 3 | 2 | 5 | 7 | 2 | 2 | 4 | 6 |
| | D.É.S.S. | | 3 | | 3 | | 2 | | 2 | | | | | | 1 | | 1 | | | | |
| | Micro. | 1 | 3 | 4 | 7 | | 3 | 3 | 6 | | | | | 1 | | 1 | 1 | | | | |
| Finance mathématique et computationnelle | D.É.S.S. | 17 | 17 | 6 | 23 | 7 | 6 | 4 | 10 | 9 | 11 | 2 | 13 | 1 | | | | 1 | | | |
| | M.Sc. | 41 | 35 | 9 | 44 | 20 | 15 | 4 | 19 | 15 | 16 | 3 | 19 | 6 | 4 | 2 | 6 | 3 | 3 | 1 | 4 |
| Géographie | M.Sc. | 9 | 5 | 2 | 7 | 2 | 3 | | 3 | 2 | | 1 | 1 | 5 | 2 | 1 | 3 | 5 | 2 | 1 | 3 |
| | Ph.D. | 7 | 2 | | 2 | | | | | 4 | 1 | | 1 | 3 | 1 | | 1 | 3 | 1 | | 1 |
| Géographie appliquée en environnement | D.É.S.S. | 7 | 7 | 2 | 9 | 2 | 3 | 1 | 4 | 2 | 1 | 1 | 2 | 3 | 3 | | 3 | 3 | 2 | | 2 |
| Géomatique et analyse spatiale | Micro. | 5 | 7 | | 7 | 1 | 4 | | 4 | 3 | 1 | | 1 | 1 | 2 | | 2 | 1 | 1 | | 1 |
| Histoire | M.A. | 18 | 11 | 3 | 14 | 4 | 1 | | 1 | 7 | 3 | 2 | 5 | 7 | 6 | 1 | 7 | 6 | 5 | 1 | 6 |
| | Ph.D. | 7 | 3 | 1 | 4 | 2 | | | | 1 | 2 | 1 | 3 | 4 | 1 | | 1 | 3 | 1 | | 1 |
| Histoire de l'art | M.A. | 8 | 3 | 5 | 8 | 3 | 1 | 1 | 2 | 3 | 1 | 2 | 3 | 2 | 1 | 2 | 3 | 2 | 1 | 2 | 3 |
| | Ph.D. | 8 | 1 | 3 | 4 | | | 1 | 1 | 6 | 1 | | 1 | 2 | | 2 | 2 | 2 | | 2 | 2 |
| Informatique | M.Sc. | 92 | 80 | 13 | 93 | 27 | 22 | 1 | 23 | 46 | 44 | 10 | 54 | 18 | 14 | 2 | 16 | 11 | 10 | 2 | 12 |
| | Ph.D. | 32 | 29 | 5 | 34 | 5 | 7 | 1 | 8 | 16 | 13 | 3 | 16 | 11 | 9 | 1 | 10 | 10 | 7 | | 7 |
| Intervention criminologique | Micro. | 6 | 1 | 5 | 6 | 4 | | 3 | 3 | | | | | 2 | 1 | 2 | 3 | 1 | 1 | 2 | 3 |
| Linguistique | M.A. | 9 | 9 | 6 | 15 | 3 | 4 | 3 | 7 | 5 | 5 | 2 | 7 | 1 | | 1 | 1 | | | 1 | 1 |
| | Ph.D. | 6 | 4 | | 4 | | | | | 5 | 4 | | 4 | | | | | | | | |
| Littérature | Ph.D. | 11 | 3 | 6 | 9 | | | 3 | 3 | 8 | 2 | | 2 | 3 | 1 | 3 | 4 | 3 | 1 | 3 | 4 |
| Littérature comparée | M.A. | 10 | 7 | 10 | 17 | 2 | 3 | 4 | 7 | 5 | 4 | 3 | 7 | 3 | | 3 | 3 | 3 | | 3 | 3 |
| Littératures de langue française | M.A. | 28 | 9 | 14 | 23 | 7 | 3 | 5 | 8 | 14 | 4 | 3 | 7 | 6 | 2 | 6 | 8 | 6 | 2 | 6 | 8 |
| | Ph.D. | 7 | 7 | 7 | 14 | | 4 | 2 | 6 | 4 | 3 | 1 | 4 | 3 | | 4 | 4 | 3 | | 4 | 4 |

CYCLES SUPÉRIEURS - TRIMESTRE D'HIVER

| FACULTÉS PROGRAMMES | | TOTAL DES DEMANDES | | | | REFUS | | | | DÉSISTEMENTS | | | | ADMIS | | | | NOUVEAUX INSCRITS | | | |
|---|----------|--------------------|----|------|----|-------|----|------|----|--------------|----|------|----|-------|---|------|----|-------------------|---|------|---|
| | | 2010 | | 2011 | | 2010 | | 2011 | | 2010 | | 2011 | | 2010 | | 2011 | | 2010 | | 2011 | |
| | | T | H | F | T | T | H | F | T | T | H | F | T | T | H | F | T | T | H | F | T |
| Mathématiques | M.Sc. | 27 | 17 | 4 | 21 | 14 | 8 | 3 | 11 | 10 | 7 | 1 | 8 | 3 | 2 | 2 | 2 | 2 | 2 | 2 | |
| | Ph.D. | 20 | 11 | 3 | 14 | 3 | 3 | 1 | 4 | 11 | 7 | 2 | 9 | 6 | 1 | 1 | 6 | 1 | 1 | 1 | |
| Méthodologies d'analyse sociologique | Micro. | 5 | 1 | 2 | 3 | | | | | 2 | | 2 | 2 | 3 | 1 | 1 | 3 | | | | |
| Muséologie | M.A. | 1 | | 1 | 1 | | | | | 1 | | 1 | 1 | | | | | | | | |
| Philosophie | M.A. | 33 | 14 | 7 | 21 | 1 | | | | 11 | 6 | 3 | 9 | 21 | 8 | 4 | 12 | 19 | 7 | 3 | |
| | Ph.D. | 14 | 9 | 2 | 11 | | | | | 8 | 5 | 1 | 6 | 6 | 4 | 1 | 5 | 4 | 4 | 4 | |
| Physique | M.Sc. | 23 | 18 | 3 | 21 | 3 | 8 | | 8 | 15 | 7 | 2 | 9 | 5 | 3 | 1 | 4 | 4 | 2 | 2 | |
| | Ph.D. | 17 | 9 | 3 | 12 | 4 | 3 | | 3 | 6 | 4 | 1 | 5 | 7 | 2 | 2 | 4 | 7 | 2 | 2 | |
| Psychoéducation | Micro. | 12 | 4 | 25 | 29 | 3 | 2 | 3 | 5 | 1 | 2 | 11 | 13 | 8 | | 11 | 11 | 7 | | 9 | |
| Psychologie | M.Sc. | 18 | 9 | 9 | 18 | 8 | 6 | 2 | 8 | 6 | 2 | 5 | 7 | 4 | 1 | 2 | 3 | 4 | 1 | 2 | |
| | Ph.D. | 12 | 9 | 6 | 15 | 1 | 1 | | 1 | 6 | 2 | 1 | 3 | 5 | 6 | 5 | 11 | 4 | 6 | 5 | |
| Psychologie (recherche et intervention) | Ph.D. | 4 | | 2 | 2 | | | | | 1 | | 1 | 1 | 2 | | 1 | 1 | 1 | | 1 | |
| Relations industrielles | M.Sc. | | 2 | 2 | 4 | | | | | | | | | | 2 | 1 | 3 | | 2 | 1 | |
| | D.É.S.S. | 34 | 9 | 18 | 27 | 17 | 5 | 9 | 14 | 8 | 2 | 7 | 9 | 9 | 2 | 2 | 4 | 7 | 2 | 1 | |
| Santé et sécurité du travail | D.É.S.S. | 33 | 15 | 12 | 27 | 5 | 3 | 4 | 7 | 14 | 8 | 2 | 10 | 13 | 4 | 6 | 10 | 11 | 4 | 4 | |
| Science politique | M.Sc. | 53 | 36 | 27 | 63 | 23 | 20 | 8 | 28 | 16 | 10 | 10 | 20 | 14 | 6 | 8 | 14 | 14 | 6 | 7 | |
| | Ph.D. | 20 | 21 | 3 | 24 | 9 | 13 | 1 | 14 | 5 | 5 | | 5 | 6 | 2 | 2 | 4 | 6 | 1 | 2 | |
| Sciences biologiques | M.Sc. | 25 | 10 | 14 | 24 | 8 | 2 | 4 | 6 | 10 | 7 | 5 | 12 | 6 | 1 | 5 | 6 | 6 | 1 | 5 | |
| | Ph.D. | 10 | 4 | 7 | 11 | 1 | | | | 7 | 2 | 5 | 7 | 2 | 2 | 2 | 4 | 2 | 2 | 1 | |
| Sciences de la communication | M.Sc. | 40 | 18 | 33 | 51 | 15 | 9 | 12 | 21 | 15 | 5 | 10 | 15 | 10 | 4 | 11 | 15 | 8 | 4 | 7 | |
| Sciences de l'information | Ph.D. | 3 | 2 | 6 | 8 | 1 | | 1 | 1 | 2 | 2 | 4 | 6 | | | 1 | 1 | | | 1 | |
| Sciences économiques | M.Sc. | 103 | 65 | 29 | 94 | 36 | 20 | 10 | 30 | 53 | 36 | 11 | 47 | 14 | 8 | 8 | 16 | 10 | 6 | 4 | |
| Sciences humaines appliquées | Ph.D. | 2 | 1 | | 1 | | | | | 1 | 1 | | 1 | 1 | | | 1 | | | | |
| Service social | M.Sc. | | 2 | 2 | 4 | | | | | | | | | | 2 | 2 | 4 | | 2 | 1 | |
| | Ph.D. | 1 | 1 | | 1 | | | | | 1 | 1 | | 1 | | | | | | | 3 | |
| Société, politiques publiques et santé | D.É.S.S. | | 3 | 8 | 11 | | | 2 | 2 | | 3 | 3 | 6 | | | 3 | 3 | | | 2 | |
| | Micro. | | 1 | 2 | 3 | | | | | | | | | | 1 | 2 | 3 | | | 1 | |

CYCLES SUPÉRIEURS - TRIMESTRE D'HIVER

| FACULTÉS PROGRAMMES | | TOTAL DES DEMANDES | | | | REFUS | | | | DÉSISTEMENTS | | | | ADMIS | | | | NOUVEAUX INSCRITS | | | |
|------------------------------|----------|--------------------|------------|------------|-------------|------------|------------|------------|------------|--------------|------------|------------|------------|------------|------------|------------|------------|-------------------|------------|------------|------------|
| | | 2010 | | 2011 | | 2010 | | 2011 | | 2010 | | 2011 | | 2010 | | 2011 | | 2010 | | 2011 | |
| | | T | H | F | T | T | H | F | T | T | H | F | T | T | H | F | T | T | H | F | T |
| Sociologie | M.Sc. | 23 | 16 | 11 | 27 | 1 | 3 | 3 | 6 | 10 | 7 | 1 | 8 | 8 | 6 | 6 | 12 | 6 | 6 | 4 | 10 |
| | Ph.D. | 11 | 5 | 2 | 7 | | 1 | | 1 | 8 | 2 | 1 | 3 | 3 | 2 | 1 | 3 | 2 | 2 | 1 | 3 |
| Statistique | M.Sc. | 27 | 21 | 5 | 26 | 10 | 9 | 3 | 12 | 12 | 10 | 2 | 12 | 5 | 2 | | 2 | 5 | 2 | | 2 |
| | Ph.D. | 7 | 10 | 3 | 13 | 1 | 2 | 2 | 4 | 5 | 7 | 1 | 8 | 1 | 1 | | 1 | 1 | 1 | | 1 |
| Statistiques sociales | Micro. | 3 | 1 | 1 | 2 | | | | | 2 | 1 | 1 | 2 | | | | | | | | |
| Traduction | M.A. | 4 | 1 | 4 | 5 | | | | | 2 | | | | 2 | 1 | 4 | 5 | 2 | 1 | 4 | 5 |
| | Ph.D. | 9 | 1 | | 1 | 2 | | | | 5 | 1 | | 1 | | | | | | | | |
| Total 2e cycle | | 905 | 551 | 394 | 945 | 265 | 192 | 117 | 309 | 379 | 238 | 140 | 378 | 251 | 119 | 134 | 253 | 211 | 102 | 100 | 202 |
| Total 3e cycle | | 242 | 159 | 73 | 232 | 32 | 39 | 13 | 52 | 133 | 78 | 28 | 106 | 72 | 41 | 32 | 73 | 61 | 36 | 28 | 64 |
| TOTAL DE LA FACULTÉ | | 1147 | 710 | 467 | 1177 | 297 | 231 | 130 | 361 | 512 | 316 | 168 | 484 | 323 | 160 | 166 | 326 | 272 | 138 | 128 | 266 |
| <u>DROIT</u> | | | | | | | | | | | | | | | | | | | | | |
| Droit | LL.M. | 71 | 50 | 37 | 87 | 20 | 12 | 6 | 18 | 18 | 24 | 11 | 35 | 33 | 14 | 19 | 33 | 30 | 12 | 17 | 29 |
| | LL.D. | 6 | 3 | 1 | 4 | | | | | 1 | | | | 5 | 3 | 1 | 4 | 4 | 2 | 1 | 3 |
| Droit des affaires | D.É.S.S. | 50 | 27 | 14 | 41 | 11 | 13 | 5 | 18 | 24 | 9 | 3 | 12 | 15 | 5 | 6 | 11 | 8 | 5 | 4 | 9 |
| | Micro. | 24 | 14 | 9 | 23 | 5 | 7 | 3 | 10 | 8 | 3 | 4 | 7 | 11 | 4 | 2 | 6 | 8 | 1 | 2 | 3 |
| Droit des biotechnologies | Micro. | | | 2 | 2 | | | | | | | 2 | 2 | | | | | | | | |
| Droit et travail | Micro. | 23 | 10 | 17 | 27 | 7 | | 6 | 6 | 8 | 4 | 5 | 9 | 8 | 6 | 6 | 12 | 8 | 6 | 6 | 12 |
| Droit international | D.É.S.S. | 57 | 34 | 24 | 58 | 18 | 13 | 10 | 23 | 27 | 12 | 9 | 21 | 12 | 9 | 5 | 14 | 5 | 6 | 2 | 8 |
| | Micro. | 18 | 13 | 12 | 25 | 5 | 4 | 2 | 6 | 9 | 8 | 6 | 14 | 4 | 1 | 4 | 5 | 4 | 1 | 4 | 5 |
| Droit notarial | D.D.N. | 44 | 16 | 54 | 70 | 3 | 5 | 9 | 14 | 13 | 7 | 23 | 30 | 28 | 4 | 22 | 26 | 23 | 4 | 17 | 21 |
| J.D. Common Law Nord-Ame. | D.E.S. | | 21 | 41 | 62 | | | | | | | | | | 21 | 41 | 62 | | | | |
| Notariat | LL.M. | 9 | 7 | 4 | 11 | 3 | 3 | 1 | 4 | 5 | 3 | 3 | 6 | 1 | 1 | | 1 | 1 | | | |
| Technologie de l'information | Micro. | 7 | 6 | 8 | 14 | | 3 | 2 | 5 | 5 | 3 | 4 | 7 | 2 | | 2 | 2 | 1 | | 2 | 2 |
| Total 2e cycle | | 303 | 198 | 222 | 420 | 72 | 60 | 44 | 104 | 117 | 73 | 70 | 143 | 114 | 65 | 107 | 172 | 88 | 35 | 54 | 89 |
| Total 3e cycle | | 6 | 3 | 1 | 4 | | | | | 1 | | | | 5 | 3 | 1 | 4 | 4 | 2 | 1 | 3 |
| TOTAL DE LA FACULTÉ | | 309 | 201 | 223 | 424 | 72 | 60 | 44 | 104 | 118 | 73 | 70 | 143 | 119 | 68 | 108 | 176 | 92 | 37 | 55 | 92 |

CYCLES SUPÉRIEURS - TRIMESTRE D'HIVER

| FACULTÉS PROGRAMMES | TOTAL DES DEMANDES | | | | REFUS | | | | DÉSISTEMENTS | | | | ADMIS | | | | NOUVEAUX INSCRITS | | | | |
|--------------------------------------|--------------------|----|------|----|-------|----|------|---|--------------|----|------|---|-------|----|------|----|-------------------|----|------|----|----|
| | 2010 | | 2011 | | 2010 | | 2011 | | 2010 | | 2011 | | 2010 | | 2011 | | 2010 | | 2011 | | |
| | T | H | F | T | T | H | F | T | T | H | F | T | T | H | F | T | T | H | F | T | |
| <u>ÉTUDES SUPÉRIEURES</u> | | | | | | | | | | | | | | | | | | | | | |
| M.A. individualisée | M.A. | | | 1 | 1 | | | | | | 1 | 1 | | | | | | | | | |
| | M.A. | 7 | 2 | 1 | 3 | | | | 3 | | 1 | 1 | | 1 | | 1 | | 1 | | 1 | |
| M.Sc individualisée | M.Sc. | | 4 | 1 | 5 | | | | | 1 | | 1 | | 3 | 1 | 4 | | 3 | 1 | 4 | |
| Ph.D. individualisé | Ph.D. | | 1 | | 1 | | 1 | | 1 | | | | | | | | | | | | |
| | Total 2e cycle | 7 | 6 | 3 | 9 | | | | 3 | 1 | 2 | 3 | | 4 | 1 | 5 | | 4 | 1 | 5 | |
| | Total 3e cycle | | 1 | | 1 | | 1 | | 1 | | | | | | | | | | | | |
| TOTAL DE LA FACULTÉ | | 7 | 7 | 3 | 10 | | 1 | | 1 | 3 | 1 | 2 | 3 | 4 | 1 | 5 | | 4 | 1 | 5 | |
| <u>KINÉSIOLOGIE</u> | | | | | | | | | | | | | | | | | | | | | |
| Kinésiologie | M.Sc. | 15 | 9 | 9 | 18 | 4 | 4 | 3 | 7 | 5 | 3 | 3 | 6 | 6 | 2 | 3 | 5 | 6 | 2 | 3 | 5 |
| | D.É.S.S. | 7 | 14 | 6 | 20 | 2 | 7 | | 7 | 3 | 6 | 3 | 9 | 2 | 1 | 3 | 4 | 2 | 1 | 3 | 4 |
| | Micro. | 7 | 8 | 3 | 11 | | 2 | | 2 | | 4 | 1 | 5 | 7 | 2 | 2 | 4 | 3 | 1 | 1 | 2 |
| Sciences de l'activité physique | M.Sc. | 5 | 5 | 3 | 8 | 2 | 1 | | 1 | 1 | 1 | | 1 | 2 | 3 | 2 | 5 | 2 | 3 | 2 | 5 |
| | Ph.D. | 5 | 2 | 1 | 3 | | | | | 2 | 1 | 1 | 2 | 3 | 1 | | 1 | 3 | 1 | | 1 |
| | Total 2e cycle | 34 | 36 | 21 | 57 | 8 | 14 | 3 | 17 | 9 | 14 | 7 | 21 | 17 | 8 | 10 | 18 | 13 | 7 | 9 | 16 |
| | Total 3e cycle | 5 | 2 | 1 | 3 | | | | | 2 | 1 | 1 | 2 | 3 | 1 | | 1 | 3 | 1 | | 1 |
| TOTAL DU DÉPARTEMENT | | 39 | 38 | 22 | 60 | 8 | 14 | 3 | 17 | 11 | 15 | 8 | 23 | 20 | 9 | 10 | 19 | 16 | 8 | 9 | 17 |
| <u>MÉDECINE</u> | | | | | | | | | | | | | | | | | | | | | |
| Micro Pharmacologie Clinique | Micro. | | 5 | 1 | 6 | | | | | | | | | 4 | 1 | 5 | | 2 | | 2 | |
| Administration de la santé | D.É.S.S. | 4 | | 2 | 2 | | | | | 1 | | | | 3 | | 2 | 2 | 2 | | 2 | 2 |
| | Micro. | | 1 | 1 | 2 | | | | | | | | | | 1 | 1 | 2 | | 1 | | 1 |
| Administration des services de santé | M.Sc. | 34 | 5 | 13 | 18 | 2 | | | | 5 | | | | 26 | 5 | 13 | 18 | 23 | 5 | 12 | 17 |
| Analyse Eval. Interv. Santé | Diplôme | 4 | 1 | 1 | 2 | | | | | 2 | 1 | | 1 | 2 | | 1 | 1 | | | 1 | 1 |
| Anatomo-pathologie | D.É.S. | | | 1 | 1 | | | | | | | | | | | 1 | 1 | | | 1 | 1 |
| Biochimie | M.Sc. | 36 | 15 | 13 | 28 | 13 | 4 | 3 | 7 | 15 | 8 | 6 | 14 | 8 | 3 | 4 | 7 | 6 | 2 | 4 | 6 |

CYCLES SUPÉRIEURS - TRIMESTRE D'HIVER

| FACULTÉS PROGRAMMES | | TOTAL DES DEMANDES | | | | REFUS | | | | DÉSISTEMENTS | | | | ADMIS | | | | NOUVEAUX INSCRITS | | | |
|---|----------|--------------------|----|------|----|-------|---|------|---|--------------|----|------|----|-------|---|------|----|-------------------|---|------|----|
| | | 2010 | | 2011 | | 2010 | | 2011 | | 2010 | | 2011 | | 2010 | | 2011 | | 2010 | | 2011 | |
| | | T | H | F | T | T | H | F | T | T | H | F | T | T | H | F | T | T | H | F | T |
| Biochimie | Ph.D. | 17 | 8 | 10 | 18 | | | 1 | 1 | 9 | 5 | 6 | 11 | 8 | 3 | 3 | 6 | 5 | 3 | 3 | 6 |
| Biochimie clinique (études postdoctorales) | D.E.P.D. | 4 | 3 | | 3 | 1 | 2 | | 2 | 1 | 1 | | 1 | 1 | | | | 1 | | | |
| Bioéthique | D.É.S.S. | 4 | | 4 | 4 | | | 1 | 1 | 1 | | 1 | 1 | 3 | | 2 | 2 | 1 | | 2 | 2 |
| | M.A. | 4 | 5 | 9 | 14 | | | 1 | 1 | 2 | 2 | 2 | 4 | 1 | 3 | 6 | 9 | 1 | 2 | 5 | 7 |
| | Micro. | 2 | | 3 | 3 | | | | | 1 | | 3 | 3 | 1 | | | | | | | |
| Bioinformatique | M.Sc. | 19 | 21 | 8 | 29 | 7 | 3 | | 3 | 11 | 11 | 4 | 15 | 1 | 7 | 4 | 11 | | 4 | 2 | 6 |
| | Ph.D. | 4 | 2 | 5 | 7 | | | | | 3 | 1 | 4 | 5 | 1 | 1 | 1 | 2 | 1 | 1 | 1 | 2 |
| Biologie moléculaire | M.Sc. | 33 | 20 | 19 | 39 | 8 | 3 | 4 | 7 | 13 | 12 | 10 | 22 | 10 | 5 | 5 | 10 | 7 | 5 | 3 | 8 |
| | Ph.D. | 14 | 11 | 13 | 24 | | | | | 9 | 8 | 11 | 19 | 5 | 3 | 2 | 5 | 4 | 1 | 2 | 3 |
| Cardiologie | D.É.S. | 4 | | 1 | 1 | | | | | | | | | 4 | | 1 | 1 | | | | |
| Chirurgie cardiaque | D.É.S. | 1 | 1 | | 1 | | | | | | | | | | | | | | | | |
| Chirurgie générale | D.É.S. | 1 | 2 | | 2 | | | | | | | | | 1 | 1 | | 1 | | | | |
| Chirurgie plastique | D.É.S. | | 1 | | 1 | | 1 | | 1 | | | | | | | | | | | | |
| Chirurgie vasculaire | D.É.S. | | 1 | | 1 | | | | | | | | | | 1 | | 1 | | | | |
| Complémentaire en mobilité et posture | Micro. | | | 1 | 1 | | | 1 | 1 | | | | | | | | | | | | |
| Dermatologie | D.É.S. | | | 1 | 1 | | | | | | | | | | | 1 | 1 | | | 1 | 1 |
| Échocardiographie transoesophagienne péri-opératoire | Micro. | | | 1 | 1 | | | 1 | 1 | | | | | | | | | | | | |
| Endocrinologie et métabolisme chez l'enfant | D.É.S. | | | 1 | 1 | | | | | | | | | | | 1 | 1 | | | 1 | 1 |
| Endocrinologie gynécologique de la reproduction et de l'infertilité | D.É.S. | | | 2 | 2 | | | | | | | | | | | 2 | 2 | | | 1 | 1 |
| Env., santé, ges. catas. | D.É.S.S. | 29 | 16 | 16 | 32 | 10 | 4 | 3 | 7 | 9 | 9 | 4 | 13 | 10 | 3 | 9 | 12 | 8 | 3 | 7 | 10 |
| Etudes cliniques pédiatriques | Micro. | | | 7 | 7 | | | | | | | | | | | 7 | 7 | | | 7 | 7 |
| Génétique médicale | Micro. | | 3 | 4 | 7 | | | | | | 3 | 4 | 7 | | | | | | | | |
| | D.É.S. | 1 | 1 | | 1 | | 1 | | 1 | | | | | 1 | | | | | | | |
| Génie biomédical | M.Sc.A. | 17 | 7 | 5 | 12 | 2 | 2 | 1 | 3 | 9 | 1 | 2 | 3 | 6 | 4 | 2 | 6 | 4 | 3 | 2 | 5 |
| | D.É.S.S. | 14 | 1 | 2 | 3 | 6 | | | | 5 | | 1 | 1 | 3 | 1 | 1 | 2 | 1 | | 1 | 1 |

CYCLES SUPÉRIEURS - TRIMESTRE D'HIVER

| FACULTÉS PROGRAMMES | | TOTAL DES DEMANDES | | | | REFUS | | | | DÉSISTEMENTS | | | | ADMIS | | | | NOUVEAUX INSCRITS | | | |
|---|----------|--------------------|----|------|----|-------|---|------|---|--------------|---|------|----|-------|---|------|---|-------------------|---|------|---|
| | | 2010 | | 2011 | | 2010 | | 2011 | | 2010 | | 2011 | | 2010 | | 2011 | | 2010 | | 2011 | |
| | | T | H | F | T | T | H | F | T | T | H | F | T | T | H | F | T | T | H | F | T |
| Génie biomédical | Ph.D. | 7 | 1 | 1 | 2 | | | | | 5 | | | | 2 | 1 | 1 | 2 | 1 | 1 | | 1 |
| Gestion du système de santé | Diplôme | 14 | 2 | 1 | 3 | | | | | 2 | | | | 11 | 2 | 1 | 3 | 3 | 2 | 1 | 3 |
| Immunologie clinique et allergie | D.É.S. | | | 1 | 1 | | | | | | | | | | | 1 | 1 | | | 1 | 1 |
| Insurance Medecine Expert | D.É.S.S. | 12 | 4 | | 4 | | | | | | | | | 12 | 4 | | 4 | 12 | 4 | | 4 |
| | Micro. | 2 | 3 | 1 | 4 | | | | | | | | | 2 | 3 | 1 | 4 | 2 | 2 | 1 | 3 |
| Maladies infectieuses chez l'enfant | D.É.S. | | | 1 | 1 | | | | | | | | | | | 1 | 1 | | | 1 | 1 |
| Médecine - tronc commun | D.É.S. | | 1 | | 1 | | | | | | | | | | 1 | | 1 | | | | |
| Médecine d'assurance et expertise en sciences de la santé | Micro. | 6 | 4 | 3 | 7 | | | | | | 1 | 2 | 3 | 5 | 3 | 1 | 4 | 4 | 3 | 1 | 4 |
| Médecine d'assurance et expertise en sciences de la santé | D.É.S.S. | 6 | 1 | 1 | 2 | 1 | | | | 1 | | 1 | 1 | 4 | 1 | | 1 | 3 | 1 | | 1 |
| Médecine d'assurance et expertise médico-légale (international) | Micro. | | 2 | 1 | 3 | | | | | | 2 | 1 | 3 | | | | | | | | |
| Médecine de soins intensifs | D.É.S. | | 1 | | 1 | | | | | | | | | | 1 | | 1 | | 1 | | 1 |
| Médecine d'urgence pédiatrique | D.É.S. | | | 1 | 1 | | | | | | | | | | | 1 | 1 | | | | |
| Médecine familiale | D.É.S. | 8 | 2 | 2 | 4 | | 1 | | 1 | | | | | 8 | 1 | 2 | 3 | 8 | 1 | 2 | 3 |
| Médecine familiale - soins aux personnes âgées | D.É.S. | | | 1 | 1 | | | | | | | | | | | 1 | 1 | | | 1 | 1 |
| Microbiologie et immunologie | M.Sc. | 21 | 10 | 13 | 23 | 11 | 5 | 4 | 9 | 7 | 5 | 6 | 11 | 3 | | 2 | 2 | 3 | | 2 | 2 |
| | Ph.D. | 15 | 9 | 7 | 16 | 3 | 4 | 1 | 5 | 10 | 4 | 5 | 9 | 2 | 1 | 1 | 2 | 1 | 1 | | 1 |
| Neurochirurgie | D.É.S. | | 2 | | 2 | | | | | | | | | | 2 | | 2 | | | | |
| Neurologie | D.É.S. | | | 1 | 1 | | | | | | | | | | | 1 | 1 | | | 1 | 1 |
| Neuroradiologie | D.É.S. | | 1 | | 1 | | | | | | | | | | 1 | | 1 | | | | |
| Nutrition | D.É.S.S. | 24 | 3 | 10 | 13 | 4 | 1 | 3 | 4 | 5 | 2 | 3 | 5 | 14 | | 4 | 4 | 12 | | 4 | 4 |
| | Micro. | 11 | 2 | 4 | 6 | 3 | | 1 | 1 | 4 | | 1 | 1 | 4 | 2 | 2 | 4 | 3 | 2 | 1 | 3 |
| | Ph.D. | 9 | 2 | 4 | 6 | | | | | 5 | 2 | 3 | 5 | 4 | | | | 3 | | | |
| Nutrition (maîtrise de recherche) | M.Sc. | 21 | 1 | 7 | 8 | | | 1 | 1 | 6 | 1 | | 1 | 11 | | 6 | 6 | 10 | | 5 | 5 |
| Nutrition (maîtrise professionnelle) | M.Sc. | 14 | 1 | 10 | 11 | 1 | | 1 | 1 | 5 | | 1 | 1 | 3 | 1 | 7 | 8 | 3 | 1 | 6 | 7 |
| Ophtalmologie | D.É.S. | | 1 | | 1 | | | | | | | | | | | | | | | | |

CYCLES SUPÉRIEURS - TRIMESTRE D'HIVER

| FACULTÉS PROGRAMMES | | TOTAL DES DEMANDES | | | | REFUS | | | | DÉSISTEMENTS | | | | ADMIS | | | | NOUVEAUX INSCRITS | | | |
|---|----------|--------------------|----|------|----|-------|---|------|---|--------------|---|------|----|-------|---|------|----|-------------------|---|------|----|
| | | 2010 | | 2011 | | 2010 | | 2011 | | 2010 | | 2011 | | 2010 | | 2011 | | 2010 | | 2011 | |
| | | T | H | F | T | T | H | F | T | T | H | F | T | T | H | F | T | T | H | F | T |
| Pathologie et biologie cellulaire | M.Sc. | 16 | 5 | 7 | 12 | 7 | 4 | 4 | 8 | 6 | | 2 | 2 | 3 | 1 | 1 | 2 | 3 | 1 | 1 | 2 |
| | Ph.D. | 4 | 6 | 5 | 11 | 2 | | 3 | 3 | 1 | 3 | 1 | 4 | 1 | 3 | 1 | 4 | | 2 | 1 | 3 |
| Pédiatrie - tronc commun | D.É.S. | | | 1 | 1 | | | | | | | | | | | 1 | 1 | | | | |
| Pédiatrie du développement | D.É.S. | | | 1 | 1 | | | | | | | | | | | 1 | 1 | | | 1 | 1 |
| Pédiatrie générale | D.É.S. | | | 1 | 1 | | | | | | | | | | | 1 | 1 | | | 1 | 1 |
| Petite enfance - approche interprofessionnelle | D.É.S.S. | | | 2 | 2 | | | | | | | | | | | 2 | 2 | | | 2 | 2 |
| | Micro. | | | 1 | 1 | | | | | | | | | | | 1 | 1 | | | | |
| Pharmacogénomique | Micro. | 1 | 3 | 1 | 4 | 1 | 1 | | 1 | | 2 | 1 | 3 | | | | | | | | |
| Pharmacologie | M.Sc. | 25 | 4 | 7 | 11 | 4 | 1 | | 1 | 1 | 2 | 2 | 4 | 9 | | 1 | 1 | 8 | | 1 | 1 |
| | Ph.D. | 8 | 5 | 11 | 16 | 1 | | | | | 5 | 2 | 8 | 10 | 1 | 1 | 3 | 4 | 1 | 1 | 2 |
| Pharmacologie Clinique | D.E.S.S. | | 5 | 13 | 18 | | 1 | | 1 | | 1 | | 1 | | 3 | 13 | 16 | | 3 | 12 | 15 |
| Physiologie | M.Sc. | 9 | 4 | 2 | 6 | | | 2 | 2 | 3 | 4 | | 4 | 6 | | | | 6 | | | |
| | Ph.D. | 5 | | 4 | 4 | | | 1 | 1 | 4 | | 2 | 2 | 1 | | 1 | 1 | 1 | | 1 | 1 |
| Psychiatrie | D.É.S. | 1 | | 1 | 1 | 1 | | 1 | 1 | | | | | | | | | | | | |
| Radiologie diagnostique | D.É.S. | | 1 | 2 | 3 | | | | | | | | | | 1 | 1 | 2 | | 1 | | 1 |
| Réadaptation | M.Sc. | | 2 | 1 | 3 | | | 1 | 1 | | | | | | 2 | | 2 | | 2 | | 2 |
| Rééducation périnéale et pelvienne | Micro. | 34 | | 17 | 17 | 3 | | | | 4 | | 3 | 3 | 25 | | 14 | 14 | 25 | | 14 | 14 |
| Santé communautaire | M.Sc. | | | 3 | 3 | | | | | | | | | | | 3 | 3 | | | 2 | 2 |
| | Micro. | 1 | 1 | | 1 | | | | | | | | | 1 | | | | 1 | | | |
| Santé environnementale et santé au travail | M.Sc. | 23 | 12 | 12 | 24 | 5 | 3 | 3 | 6 | 9 | 1 | 2 | 3 | 9 | 8 | 7 | 15 | 7 | 8 | 6 | 14 |
| | Micro. | 7 | 7 | 9 | 16 | 1 | 4 | 3 | 7 | 4 | 2 | 1 | 3 | 2 | 1 | 5 | 6 | 1 | 1 | 5 | 6 |
| Santé publique | Micro. | 7 | 5 | 12 | 17 | 2 | 3 | 6 | 9 | 2 | 1 | | 1 | 2 | 1 | 6 | 7 | 2 | 1 | 5 | 6 |
| | Ph.D. | 8 | 4 | 5 | 9 | | | | | 1 | 2 | 2 | 4 | 6 | 2 | 3 | 5 | 5 | 2 | 3 | 5 |
| Sciences biomédicales | M.Sc. | 38 | 10 | 24 | 34 | 9 | 2 | 6 | 8 | 13 | 6 | 10 | 16 | 16 | 2 | 8 | 10 | 15 | 2 | 7 | 9 |
| | Ph.D. | 27 | 8 | 18 | 26 | 3 | 1 | 5 | 6 | 11 | 3 | 4 | 7 | 11 | 4 | 8 | 12 | 10 | 4 | 8 | 12 |
| Sciences neurologiques | M.Sc. | 8 | 6 | 3 | 9 | | 1 | 2 | 3 | 5 | 1 | | 1 | 3 | 4 | 1 | 5 | 2 | 3 | 1 | 4 |
| | Ph.D. | 12 | 2 | 5 | 7 | | | 1 | 1 | 3 | 1 | 2 | 3 | 9 | 1 | 2 | 3 | 6 | 1 | 2 | 3 |

CYCLES SUPÉRIEURS - TRIMESTRE D'HIVER

| FACULTÉS PROGRAMMES | | TOTAL DES DEMANDES | | | | REFUS | | | | DÉSISTEMENTS | | | | ADMIS | | | | NOUVEAUX INSCRITS | | | |
|--|----------|--------------------|-----|------|-----|-------|----|------|-----|--------------|-----|------|-----|-------|-----|------|-----|-------------------|----|------|-----|
| | | 2010 | | 2011 | | 2010 | | 2011 | | 2010 | | 2011 | | 2010 | | 2011 | | 2010 | | 2011 | |
| | | T | H | F | T | T | H | F | T | T | H | F | T | T | H | F | T | T | H | F | T |
| Toxicologie et analyse du risque | D.É.S.S. | 17 | 7 | 11 | 18 | 8 | 4 | 5 | 9 | 6 | 1 | 6 | 7 | 3 | 2 | | 2 | 2 | 1 | 1 | |
| Virologie et immunologie | Ph.D. | 1 | | 1 | 1 | | | | | 1 | | 1 | 1 | | | | | | | | |
| Total 2e cycle | | 513 | 203 | 285 | 488 | 108 | 46 | 57 | 103 | 155 | 78 | 79 | 157 | 220 | 76 | 143 | 219 | 180 | 64 | 124 | 188 |
| Total 3e cycle | | 139 | 62 | 90 | 152 | 10 | 7 | 12 | 19 | 70 | 33 | 49 | 82 | 54 | 20 | 27 | 47 | 39 | 17 | 24 | 41 |
| Total Études médicales postdoctorales | | 16 | 15 | 19 | 34 | 1 | 3 | 1 | 4 | | | | | 14 | 9 | 17 | 26 | 8 | 3 | 12 | 15 |
| TOTAL DE LA FACULTÉ | | 668 | 280 | 394 | 674 | 119 | 56 | 70 | 126 | 225 | 111 | 128 | 239 | 288 | 105 | 187 | 292 | 227 | 84 | 160 | 244 |
| <u>MÉDECINE DENTAIRE</u> | | | | | | | | | | | | | | | | | | | | | |
| Sciences bucco-dentaires | M.Sc. | 6 | | 2 | 2 | 1 | | 2 | 2 | 4 | | | | 1 | | | | 1 | | | |
| Total 2e cycle | | 6 | | 2 | 2 | 1 | | 2 | 2 | 4 | | | | 1 | | | | 1 | | | |
| TOTAL DE LA FACULTÉ | | 6 | | 2 | 2 | 1 | | 2 | 2 | 4 | | | | 1 | | | | 1 | | | |
| <u>MÉDECINE VÉTÉRINAIRE</u> | | | | | | | | | | | | | | | | | | | | | |
| Biomédecine vétérinaire | D.É.S. | 1 | | 1 | 1 | 1 | | | | | | 1 | 1 | | | | | | | | |
| Internat de perfectionnement en sciences appliquées vétérinaires | Cert. | 1 | 1 | 2 | 3 | 1 | 1 | 2 | 3 | | | | | | | | | | | | |
| Pathologie vétérinaire | D.É.S. | | | 1 | 1 | | | | | | | 1 | 1 | | | | | | | | |
| Sciences cliniques vétérinaires | D.É.S. | 1 | 4 | | 4 | | 1 | | 1 | 1 | 1 | 1 | | 2 | | 2 | | 2 | | 2 | |
| Sciences vétérinaires | M.Sc. | 21 | 11 | 14 | 25 | 1 | 1 | 3 | 4 | 13 | 9 | 7 | 16 | 5 | 1 | 4 | 5 | 5 | | 4 | 4 |
| | M.Sc. | 1 | | 3 | 3 | | | 3 | 3 | 1 | | | | | | | | | | | |
| | Ph.D. | 7 | 1 | 6 | 7 | | | 1 | 1 | 5 | 1 | 5 | 6 | 2 | | | | 2 | | | |
| Total 2e cycle | | 25 | 16 | 21 | 37 | 3 | 3 | 8 | 11 | 15 | 10 | 9 | 19 | 5 | 3 | 4 | 7 | 5 | 2 | 4 | 6 |
| Total 3e cycle | | 7 | 1 | 6 | 7 | | | 1 | 1 | 5 | 1 | 5 | 6 | 2 | | | | 2 | | | |
| TOTAL DE LA FACULTÉ | | 32 | 17 | 27 | 44 | 3 | 3 | 9 | 12 | 20 | 11 | 14 | 25 | 7 | 3 | 4 | 7 | 7 | 2 | 4 | 6 |

CYCLES SUPÉRIEURS - TRIMESTRE D'HIVER

| FACULTÉS PROGRAMMES | TOTAL DES DEMANDES | | | | REFUS | | | | DÉSISTEMENTS | | | | ADMIS | | | | NOUVEAUX INSCRITS | | | | |
|--|--------------------|-----------|-----------|-----------|-----------|-----------|----------|----------|--------------|-----------|-----------|-----------|-----------|-----------|-----------|-----------|-------------------|-----------|-----------|----------|-----------|
| | 2010 | 2011 | | | 2010 | 2011 | | | 2010 | 2011 | | | 2010 | 2011 | | | 2010 | 2011 | | | |
| | T | H | F | T | T | H | F | T | T | H | F | T | T | H | F | T | T | H | F | T | |
| <u>MUSIQUE</u> | | | | | | | | | | | | | | | | | | | | | |
| Composition | M.Mus. | 7 | 8 | 2 | 10 | | 3 | 3 | 5 | 1 | 1 | 2 | 2 | 2 | 1 | 3 | 1 | 2 | 1 | 3 | |
| | D. Mus. | 6 | 2 | 1 | 3 | 1 | 1 | 1 | 2 | | 1 | 1 | 2 | 1 | | 1 | 2 | 1 | | 1 | |
| Interprétation | M.Mus. | 23 | 10 | 13 | 23 | 5 | 3 | 1 | 4 | 9 | 2 | 6 | 8 | 9 | 5 | 6 | 11 | 8 | 5 | 5 | 10 |
| | D.É.S.S. | 10 | 4 | 4 | 8 | 2 | | 2 | 2 | 4 | 4 | 2 | 6 | 4 | | | | 1 | | | |
| | D. Mus. | 11 | 12 | 4 | 16 | 3 | | | | 5 | 5 | 2 | 7 | 3 | 7 | 2 | 9 | 3 | 6 | 2 | 8 |
| Musique | M.A. | 5 | 2 | | 2 | 1 | | | 1 | | | | 2 | 2 | | 2 | 1 | 2 | | 2 | |
| | Ph.D. | 10 | | 2 | 2 | 1 | | 2 | 2 | 3 | | | 6 | | | | 3 | | | | |
| Répertoire d'orchestre | D.É.S.S. | 3 | 2 | 2 | 4 | | | 1 | 1 | 1 | 1 | | 1 | 2 | 1 | 1 | 2 | | | | |
| Total 2e cycle | | 48 | 26 | 21 | 47 | 8 | 6 | 4 | 10 | 20 | 8 | 9 | 17 | 19 | 10 | 8 | 18 | 13 | 9 | 6 | 15 |
| Total 3e cycle | | 27 | 14 | 7 | 21 | 5 | 1 | 2 | 3 | 10 | 5 | 3 | 8 | 11 | 8 | 2 | 10 | 8 | 7 | 2 | 9 |
| TOTAL DE LA FACULTÉ | | 75 | 40 | 28 | 68 | 13 | 7 | 6 | 13 | 30 | 13 | 12 | 25 | 30 | 18 | 10 | 28 | 21 | 16 | 8 | 24 |
| <u>OPTOMÉTRIE</u> | | | | | | | | | | | | | | | | | | | | | |
| Sciences de la vision | M.Sc. | 11 | | 10 | 10 | | | | | 3 | | 2 | 2 | 8 | | 8 | 8 | 8 | | 8 | 8 |
| Total 2e cycle | | 11 | | 10 | 10 | | | | | 3 | | 2 | 2 | 8 | | 8 | 8 | 8 | | 8 | 8 |
| TOTAL DE L'ÉCOLE | | 11 | | 10 | 10 | | | | | 3 | | 2 | 2 | 8 | | 8 | 8 | 8 | | 8 | 8 |
| <u>PHARMACIE</u> | | | | | | | | | | | | | | | | | | | | | |
| Pharmacie-maître de stage | D.É.S.S. | 1 | | 3 | 3 | 1 | | 1 | 1 | | | | | | 1 | 1 | | | | | |
| | Micro. | 1 | 1 | | 1 | 1 | | | | | 1 | | 1 | | | | | | | | |
| Recherche, développement et évaluation du médicament | Dipl. comp. | 2 | 2 | 1 | 3 | | | | | 1 | 1 | | 1 | 1 | 1 | 2 | 1 | | 1 | 1 | |
| Sciences pharmaceutiques | M.Sc. | 17 | 10 | 16 | 26 | 3 | 4 | 4 | 8 | 8 | 4 | 7 | 11 | 5 | 2 | 4 | 6 | 5 | 2 | 4 | 6 |
| | Ph.D. | 9 | 7 | 11 | 18 | 1 | 3 | 3 | 6 | 4 | 3 | 8 | 11 | 4 | 1 | | 1 | 4 | 1 | | 1 |
| Soins pharmaceutiques | D.É.S.S. | 8 | 1 | 4 | 5 | 1 | | 1 | 1 | | 1 | 1 | 2 | 7 | | 1 | 1 | 5 | | 1 | 1 |
| | Micro. | 7 | | 7 | 7 | 1 | | | | 1 | | 1 | 1 | 5 | | 6 | 6 | 4 | | 6 | 6 |

CYCLES SUPÉRIEURS - TRIMESTRE D'HIVER

| FACULTÉS PROGRAMMES | TOTAL DES DEMANDES | | | | REFUS | | | | DÉSISTEMENTS | | | | ADMIS | | | | NOUVEAUX INSCRITS | | | | |
|--|--------------------|-----------|-----------|-----------|----------|----------|----------|-----------|--------------|-----------|-----------|-----------|-----------|----------|-----------|-----------|-------------------|----------|-----------|-----------|----|
| | 2010 | | 2011 | | 2010 | | 2011 | | 2010 | | 2011 | | 2010 | | 2011 | | 2010 | | 2011 | | |
| | T | H | F | T | T | H | F | T | T | H | F | T | T | H | F | T | T | H | F | T | |
| Total 2e cycle | 34 | 12 | 30 | 42 | 7 | 4 | 6 | 10 | 9 | 6 | 9 | 15 | 17 | 2 | 12 | 14 | 14 | 2 | 11 | 13 | |
| Total 3e cycle | 11 | 9 | 12 | 21 | 1 | 3 | 3 | 6 | 5 | 4 | 8 | 12 | 5 | 2 | 1 | 3 | 5 | 1 | 1 | 2 | |
| TOTAL DE LA FACULTÉ | 45 | 21 | 42 | 63 | 8 | 7 | 9 | 16 | 14 | 10 | 17 | 27 | 22 | 4 | 13 | 17 | 19 | 3 | 12 | 15 | |
| <u>SCIENCES DE L'ÉDUCATION</u> | | | | | | | | | | | | | | | | | | | | | |
| Administration de l'éducation | M.A. | 11 | 1 | 2 | 3 | 3 | | 2 | 2 | 3 | | | 5 | 1 | | 1 | 3 | 1 | | 1 | |
| | D.É.S.S. | 141 | 33 | 57 | 90 | 4 | 2 | 3 | 5 | 100 | 21 | 33 | 54 | 36 | 10 | 21 | 31 | 30 | 9 | 18 | 27 |
| | M.Ed. | 20 | 4 | 13 | 17 | | 1 | | 1 | 6 | 1 | 2 | 3 | 14 | 2 | 11 | 13 | 13 | 2 | 10 | 12 |
| | Micro. | 19 | 8 | 15 | 23 | 1 | | 1 | 1 | 11 | 3 | 5 | 8 | 7 | 5 | 9 | 14 | 6 | 3 | 5 | 8 |
| | Ph.D. | 8 | 5 | 4 | 9 | 2 | 2 | | 2 | 3 | 2 | 2 | 4 | 3 | 1 | 2 | 3 | 3 | 1 | 2 | 3 |
| Administration des systèmes d'éducation et de formation | D.É.S.S. | 6 | 2 | 2 | 4 | 3 | | 2 | 2 | 3 | 1 | | 1 | | 1 | | | 1 | | 1 | |
| | Micro. | 1 | 1 | | 1 | | | | | | 1 | | 1 | 1 | | | | 1 | | | |
| Andragogie | M.A. | 2 | 1 | | 1 | | | | | 1 | 1 | | 1 | | | | 1 | | | | |
| | Ph.D. | 6 | 1 | 2 | 3 | 4 | | | | 1 | | 1 | 1 | 1 | 1 | 2 | | 1 | 1 | 2 | |
| Didactique | M.A. | 6 | 2 | 4 | 6 | 1 | | | | 1 | 1 | 3 | 4 | 4 | 1 | 1 | 2 | 4 | 1 | 1 | 2 |
| | M.Ed. | 12 | 2 | 4 | 6 | | | | | 5 | | 2 | 2 | 7 | 2 | 2 | 4 | 6 | 2 | 2 | 4 |
| | D.E.S.S. | 7 | 1 | 8 | 9 | | | | | 1 | 1 | 7 | 8 | 6 | | 1 | 1 | 5 | | 1 | 1 |
| | Micro. | 9 | 1 | 8 | 9 | | | 1 | 1 | 5 | 1 | 7 | 8 | 4 | | | | 3 | | | |
| | Ph.D. | 12 | | 6 | 6 | 2 | | 2 | 2 | 4 | | 2 | 2 | 6 | | 2 | 2 | 6 | | 2 | 2 |
| Didactique et intégration des matières | Micro. | | | 1 | 1 | | | | | | | 1 | 1 | | | | | | | | |
| Éducation comparée et fondements de l'éducation | M.A. | 6 | 1 | | 1 | 2 | 1 | | 1 | 2 | | | 2 | | | | 1 | | | | |
| | Ph.D. | 7 | 2 | 5 | 7 | 2 | | 1 | 1 | 3 | 1 | 3 | 4 | 2 | 1 | 1 | 2 | 1 | 1 | 1 | 2 |
| Enseignement au secondaire | M.Ed. | 3 | 2 | 1 | 3 | 1 | | | | | | 1 | 1 | 2 | 2 | | 2 | 1 | 2 | | 2 |
| Enseignement postsecondaire | Micro. | 142 | 47 | 52 | 99 | 8 | 3 | 8 | 11 | 37 | 14 | 13 | 27 | 97 | 30 | 31 | 61 | 55 | 20 | 29 | 49 |
| Évaluation des compétences | Micro. | 18 | | 4 | 4 | | | 2 | 2 | 4 | | 1 | 1 | 14 | | 1 | 1 | 9 | | 1 | 1 |
| Générale | D.É.S.S. | 6 | 2 | 7 | 9 | 1 | | | | 4 | 1 | 1 | 2 | 1 | 1 | 6 | 7 | 1 | 1 | 5 | 6 |
| | M.Ed. | 9 | | 6 | 6 | 1 | | 2 | 2 | 3 | | 3 | 3 | 5 | | 1 | 1 | 4 | | 1 | 1 |
| Gestion du changement en éducation | Micro. | 7 | | 1 | 1 | | | | | 3 | | 1 | 1 | 4 | | | 4 | | | | |

CYCLES SUPÉRIEURS - TRIMESTRE D'HIVER

| FACULTÉS PROGRAMMES | | TOTAL DES DEMANDES | | | | REFUS | | | | DÉSISTEMENTS | | | | ADMIS | | | | NOUVEAUX INSCRITS | | | |
|--|----------|--------------------|-----|------|-----|-------|----|------|----|--------------|----|------|-----|-------|----|------|-----|-------------------|----|------|-----|
| | | 2010 | | 2011 | | 2010 | | 2011 | | 2010 | | 2011 | | 2010 | | 2011 | | 2010 | | 2011 | |
| | | T | H | F | T | T | H | F | T | T | H | F | T | T | H | F | T | T | H | F | T |
| Insertion professionnelle en enseignement | Micro. | | | 3 | 3 | | | 2 | 2 | | | 1 | 1 | | | | | | | | |
| Intégration pédagogique des TIC | Micro. | | | 2 | 2 | | | | | | | 2 | 2 | | | | | | | | |
| Intervention éducative | M.Ed. | 10 | 5 | 7 | 12 | | | | | 5 | 2 | 3 | 5 | 5 | 3 | 4 | 7 | 4 | 3 | 3 | 6 |
| | D.É.S.S. | 16 | 2 | 17 | 19 | 1 | | 2 | 2 | 6 | | 9 | 9 | 9 | 2 | 6 | 8 | 5 | 2 | 4 | 6 |
| Mesure et évaluation en éducation | M.A. | 7 | 2 | | 2 | | 2 | | 2 | 4 | | | | 3 | | | | 2 | | | |
| | Ph.D. | 9 | 4 | 5 | 9 | 2 | | | | 5 | 2 | 4 | 6 | 2 | 2 | 1 | 3 | 1 | 1 | 1 | 2 |
| Micro Ortho. Des Math. | Micro. | | 1 | 2 | 3 | | | | | | | 1 | 2 | 3 | | | | | | | |
| Micro Ortho. Du Français | Micro. | | | 1 | 1 | | | 1 | 1 | | | | | | | | | | | | |
| Orthodidactique | D.E.S.S. | | 1 | 1 | 2 | | 1 | | 1 | | | | | | 1 | 1 | | | 1 | 1 | |
| Orthopédagogie | M.Ed. | 12 | 4 | 34 | 38 | | 1 | 2 | 3 | | 3 | 14 | 17 | 12 | | 18 | 18 | 12 | | 18 | 18 |
| Pédagogie universitaire des sciences médicales | M.A. | 2 | 1 | | 1 | | 1 | | 1 | 2 | | | | | | | | | | | |
| Psychopédagogie | M.A. | 11 | 4 | 10 | 14 | | 2 | 3 | 5 | 7 | 1 | 4 | 5 | 4 | 1 | 3 | 4 | 4 | 1 | 3 | 4 |
| | Ph.D. | 17 | 5 | 6 | 11 | 2 | | 1 | 1 | 6 | 4 | 1 | 5 | 8 | 1 | 4 | 5 | 6 | 1 | 4 | 5 |
| Sciences de l'éducation | Micro. | 2 | 1 | | 1 | | 1 | | 1 | 2 | | | | | | | | | | | |
| Soutien à l'apprentissage | Micro. | 1 | | 3 | 3 | | | 1 | 1 | 1 | | 2 | 2 | | | | | | | | |
| Total 2e cycle | | 486 | 131 | 263 | 394 | 26 | 15 | 32 | 47 | 216 | 55 | 115 | 170 | 243 | 61 | 116 | 177 | 174 | 48 | 102 | 150 |
| Total 3e cycle | | 59 | 17 | 28 | 45 | 14 | 2 | 4 | 6 | 22 | 9 | 13 | 22 | 22 | 6 | 11 | 17 | 17 | 5 | 11 | 16 |
| TOTAL DE LA FACULTÉ | | 545 | 148 | 291 | 439 | 40 | 17 | 36 | 53 | 238 | 64 | 128 | 192 | 265 | 67 | 127 | 194 | 191 | 53 | 113 | 166 |
| <u>SCIENCES INFIRMIÈRES</u> | | | | | | | | | | | | | | | | | | | | | |
| DESS Prév. Contr. Infect. | D.É.S.S. | | 1 | 4 | 5 | | | | | | | 1 | 1 | | 1 | 3 | 4 | | | 3 | 3 |
| Développement des pratiques infirmières | Micro. | | | 2 | 2 | | | | | | | | | | | 1 | 1 | | | 1 | 1 |
| Leadership et gestion des services infirmiers | Micro. | 4 | 3 | 6 | 9 | | | | | 1 | 1 | 1 | 2 | | 2 | 5 | 7 | | 2 | 3 | 5 |
| Prévention et contrôle des infections | Micro. | | 2 | 3 | 5 | | | | | | | | | | 2 | 3 | 5 | | 1 | 3 | 4 |

CYCLES SUPÉRIEURS - TRIMESTRE D'HIVER

| FACULTÉS PROGRAMMES | | TOTAL DES DEMANDES | | | | REFUS | | | | DÉSISTEMENTS | | | | ADMIS | | | | NOUVEAUX INSCRITS | | | |
|---|----------|--------------------|----|------|-----|-------|---|------|---|--------------|----|------|----|-------|----|------|-----|-------------------|----|------|----|
| | | 2010 | | 2011 | | 2010 | | 2011 | | 2010 | | 2011 | | 2010 | | 2011 | | 2010 | | 2011 | |
| | | T | H | F | T | T | H | F | T | T | H | F | T | T | H | F | T | T | H | F | T |
| Sciences infirmières | M.Sc. | 19 | | 4 | 4 | | | | | 1 | | | | 16 | | 4 | 4 | 13 | | 4 | 4 |
| | D.É.S.S. | 2 | | 1 | 1 | | | | | 2 | | | | | | 1 | 1 | | | | |
| | Ph.D. | | | 2 | 2 | | | | | | | | | | | 2 | 2 | | | | |
| Soins palliat. - fin de vie | Micro. | 1 | | 1 | 1 | | | | | | | | | | | 1 | 1 | | | 1 | 1 |
| Total 2e cycle | | 26 | 6 | 21 | 27 | | | | | 4 | 1 | 2 | 3 | 16 | 5 | 18 | 23 | 13 | 3 | 15 | 18 |
| Total 3e cycle | | | | 2 | 2 | | | | | | | | | | | 2 | 2 | | | | |
| TOTAL DE LA FACULTÉ | | 26 | 6 | 23 | 29 | | | | | 4 | 1 | 2 | 3 | 16 | 5 | 20 | 25 | 13 | 3 | 15 | 18 |
| <u>THÉOLOGIE ET SCIENCES DES RELIGIONS</u> | | | | | | | | | | | | | | | | | | | | | |
| Doctorat en théologie (grade canonique) | D.Th. | | | 1 | 1 | | | | | | | | | | | 1 | 1 | | | | |
| Licence en théologie (grade canonique) | Licence | 1 | 1 | | 1 | | | | | 1 | | | | | | 1 | 1 | | | | |
| Santé, spiritualité et bioéthique | D.É.S.S. | 4 | 1 | | 1 | 1 | | | | 2 | | | | 1 | 1 | | 1 | 1 | 1 | 1 | 1 |
| | Micro. | | | 1 | 1 | | | | | | | | | | | 1 | 1 | | | 1 | 1 |
| Sciences des religions | M.A. | 3 | 6 | 1 | 7 | | | | | 3 | 2 | | 2 | | 4 | 1 | 5 | | 3 | 1 | 4 |
| | Micro. | 16 | 2 | | 2 | | 1 | | 1 | 5 | | | | 11 | 1 | | 1 | 10 | 1 | | 1 |
| | Ph.D. | 10 | 2 | 1 | 3 | | | | | 4 | 1 | 1 | 2 | 6 | 1 | | 1 | 4 | 1 | | 1 |
| Théologie | M.A. | 3 | 3 | 3 | 6 | 1 | | | | 2 | 2 | 2 | 4 | | 1 | 1 | 2 | | 1 | 1 | 2 |
| | Ph.D. | 4 | 1 | 2 | 3 | | | | | 3 | 1 | 2 | 3 | 1 | | | | 1 | | | |
| Théologie pratique | M.A. | 3 | 3 | | 3 | | | | | 2 | 2 | | 2 | 1 | 1 | | 1 | 1 | 1 | | 1 |
| | Micro. | | | 1 | 1 | | | | | | 1 | | 1 | | | | | | | | |
| | Ph.D. | 5 | 2 | | 2 | 2 | | | | 1 | 2 | | 2 | 1 | | | 1 | | | | |
| Total 2e cycle | | 30 | 18 | 4 | 22 | 2 | 1 | | 1 | 15 | 7 | 2 | 9 | 13 | 10 | 2 | 12 | 12 | 8 | 2 | 10 |
| Total 3e cycle | | 19 | 6 | 3 | 9 | 2 | | | | 8 | 4 | 3 | 7 | 8 | 2 | | 2 | 6 | 1 | | 1 |
| TOTAL DE LA FACULTÉ | | 49 | 24 | 7 | 31 | 4 | 1 | | 1 | 23 | 11 | 5 | 16 | 21 | 12 | 2 | 14 | 18 | 9 | 2 | 11 |
| <u>UNIVERSITÉ DE MONTRÉAL</u> | | | | | | | | | | | | | | | | | | | | | |
| Programmes d'échanges (2e cycle) | | 110 | 41 | 77 | 118 | 7 | 3 | 4 | 7 | 12 | 2 | 5 | 7 | 91 | 36 | 67 | 103 | 89 | 34 | 63 | 97 |

CYCLES SUPÉRIEURS - TRIMESTRE D'HIVER

| FACULTÉS PROGRAMMES | TOTAL DES DEMANDES | | | | REFUS | | | | DÉSISTEMENTS | | | | ADMIS | | | | NOUVEAUX INSCRITS | | | |
|---------------------------------------|--------------------|-------------|-------------|-------------|------------|------------|------------|------------|--------------|------------|------------|-------------|-------------|------------|------------|-------------|-------------------|------------|------------|-------------|
| | 2010 | 2011 | | | 2010 | 2011 | | | 2010 | 2011 | | | 2010 | 2011 | | | 2010 | 2011 | | |
| | T | H | F | T | T | H | F | T | T | H | F | T | T | H | F | T | T | H | F | T |
| Programmes d'échanges (3e cycle) | 7 | 1 | 3 | 4 | | | | | | | | | 7 | 1 | 3 | 4 | 7 | 1 | 3 | 4 |
| Total 2e cycle | 110 | 41 | 77 | 118 | 7 | 3 | 4 | 7 | 12 | 2 | 5 | 7 | 91 | 36 | 67 | 103 | 89 | 34 | 63 | 97 |
| Total 3e cycle | 7 | 1 | 3 | 4 | | | | | | | | | 7 | 1 | 3 | 4 | 7 | 1 | 3 | 4 |
| TOTAL ÉCHANGES & VISITEURS | 117 | 42 | 80 | 122 | 7 | 3 | 4 | 7 | 12 | 2 | 5 | 7 | 98 | 37 | 70 | 107 | 96 | 35 | 66 | 101 |
| TOTAL UNIVERSITÉ DE MONTRÉAL | | | | | | | | | | | | | | | | | | | | |
| Total 2e cycle | 2664 | 1310 | 1431 | 2741 | 530 | 363 | 292 | 655 | 1004 | 523 | 468 | 991 | 1063 | 414 | 651 | 1065 | 865 | 332 | 516 | 848 |
| Total 3e cycle | 537 | 282 | 233 | 515 | 65 | 54 | 35 | 89 | 265 | 140 | 114 | 254 | 193 | 85 | 81 | 166 | 156 | 71 | 71 | 142 |
| Total Études médicales postdoctorales | 16 | 15 | 19 | 34 | 1 | 3 | 1 | 4 | | | | | 14 | 9 | 17 | 26 | 8 | 3 | 12 | 15 |
| TOTAL DES CYCLES SUPÉRIEURS | 3217 | 1607 | 1683 | 3290 | 596 | 420 | 328 | 748 | 1269 | 663 | 582 | 1245 | 1270 | 508 | 749 | 1257 | 1029 | 406 | 599 | 1005 |

INSCRIPTION DES NOUVEAUX ÉTUDIANTS - TRIMESTRE D'HIVER

| | | CANDIDATS AUTORISÉS À S'INSCRIRE (1) | | | | INSCRIPTIONS | | | Candidats non inscrits |
|---|------|--------------------------------------|--------------------------|-----|-------|--------------|---------------|-------|------------------------|
| | | Demandes d'admission | Changements de programme | | TOTAL | STATUT | | TOTAL | |
| | (2) | | (3) | | | Temps plein | Temps partiel | | |
| Premier cycle (sauf F.E.P. et programmes multifacultaires) | 2010 | 1 812 | 122 | 537 | 2 471 | 1 697 | 668 | 2 365 | 106 |
| | 2011 | 1 910 | 102 | 519 | 2 531 | 1 748 | 661 | 2 409 | 122 |
| Éducation permanente (FEP) | 2010 | 914 | 91 | 220 | 1 225 | 259 | 849 | 1 108 | 117 |
| | 2011 | 1 065 | 91 | 258 | 1 414 | 361 | 913 | 1 274 | 140 |
| Programmes multifacultaires | 2010 | 122 | 14 | 24 | 160 | 24 | 127 | 151 | 9 |
| | 2011 | 101 | 6 | 24 | 131 | 15 | 104 | 119 | 12 |
| <u>TOTAL DU PREMIER CYCLE</u> | 2010 | 2 848 | 227 | 781 | 3 856 | 1 980 | 1 644 | 3 624 | 232 |
| | 2011 | 3 076 | 199 | 801 | 4 076 | 2 124 | 1 678 | 3 802 | 274 |
| Deuxième cycle | 2010 | 968 | | 102 | 1 070 | 504 | 368 | 872 | 198 |
| | 2011 | 992 | | 73 | 1 065 | 491 | 357 | 848 | 217 |
| Études médicales postdoctorales | 2010 | 26 | | 6 | 32 | 17 | | 17 | 15 |
| | 2011 | 17 | | 9 | 26 | 15 | | 15 | 11 |
| Doctorat | 2010 | 195 | | 3 | 198 | 150 | 12 | 162 | 36 |
| | 2011 | 163 | 1 | 2 | 166 | 129 | 13 | 142 | 24 |
| <u>TOTAL DES CYCLES SUPÉRIEURS</u> | 2010 | 1 189 | | 111 | 1 300 | 671 | 380 | 1 051 | 249 |
| | 2011 | 1 172 | 1 | 84 | 1 257 | 635 | 370 | 1 005 | 252 |
| <u>GRAND TOTAL</u> | 2010 | 4 037 | 227 | 892 | 5 156 | 2 651 | 2 024 | 4 675 | 481 |
| | 2011 | 4 248 | 200 | 885 | 5 333 | 2 759 | 2 048 | 4 807 | 526 |

(1) Un candidat est autorisé à s'inscrire quand il a accepté une offre d'admission et qu'il n'y a pas eu désistement de sa part.

(2) Changement de programme impliquant une nouvelle faculté [exemple: de la Faculté des arts et sciences à la Faculté de médecine dentaire].

(3) Changement de programme à l'intérieur de la même faculté [exemple: d'un programme de sociologie à un programme d'anthropologie].

Sources: Rapports ACCR33 et ADDR33 en date du 2011-04-26 et 2010-04-26 respectivement.

PROVENANCE DES CANDIDATS ÉTRANGERS - TRIMESTRE D'HIVER

| Pays/États | Premier cycle | | | Deuxième cycle | | | Troisième cycle | | | Internat/Résidence | | | Total | | | | | | | | | | | | | | | | | | |
|------------------------------------|---------------|-------|----------|----------------|-------|----------|-----------------|-------|----------|--------------------|-------|----------|-----------|----------|-----|-----|---|-----|-------|---|------|-----|-----|------|-------|------|------|------|-----|---|-----|
| | Choix | Admis | Inscrits | Choix | Admis | Inscrits | Choix | Admis | Inscrits | Choix | Admis | Inscrits | Candidats | Inscrits | | | | | | | | | | | | | | | | | |
| <u>Programmes réguliers</u> | | | | | | | | | | | | | | | | | | | | | | | | | | | | | | | |
| Afrique du Sud | 1 | 1 | 1 | 1 | [1] | 1 | 1 | [1] | 1 | | | | 2 | [1] | 2 | | | | | | | | | | | | | | | | |
| Algérie | 218 | [216] | 12 | [11] | 5 | [9] | 111 | [127] | 7 | [7] | 2 | [4] | 12 | [15] | [1] | [1] | 1 | 168 | [187] | 7 | [14] | | | | | | | | | | |
| Angola | 3 | | | | | | | | | | | | | | | | | 1 | | | | | | | | | | | | | |
| Antigua-et-Barbuda | 3 | | | | | | | | | | | | | | | | | 1 | | | | | | | | | | | | | |
| Arabie saoudite | 3 | [1] | 1 | | | | | | | | | | 1 | [2] | 1 | 1 | | [1] | | | 2 | [3] | 1 | | | | | | | | |
| Argentine | | | | | | | [3] | | | | | | 1 | [1] | | | | | | | 1 | [3] | | | | | | | | | |
| Autriche | 2 | [1] | 1 | | 1 | | | | | | | | | | | | | | | | 2 | [1] | 1 | | | | | | | | |
| Bahamas | | | | | | | | | | | | | 1 | | | | | | | | | | 1 | | | | | | | | |
| Bélarus | 3 | | | | | | | | | | | | | | | | | | | | | | 1 | | | | | | | | |
| Belgique | 14 | [14] | 3 | | 3 | [1] | 3 | [6] | | [3] | | [1] | 2 | [2] | | [2] | | [1] | | | | | 10 | [12] | 3 | [3] | | | | | |
| Bénin | 60 | [48] | 9 | [10] | 9 | [11] | 15 | [22] | 2 | [2] | 1 | [1] | 3 | [5] | | [1] | | [1] | | | | | 41 | [46] | 10 | [13] | | | | | |
| Brésil | 20 | [7] | 3 | [2] | 3 | [1] | 10 | [7] | 2 | [2] | 1 | [1] | 4 | [8] | 2 | [3] | 1 | [3] | | | | | [1] | [1] | 19 | [18] | 5 | [5] | | | |
| Bulgarie | | [2] | | | | | 1 | | 1 | | | | | | | | | | | | | | | 1 | [1] | | | | | | |
| Burkina Faso | 86 | [53] | 5 | [10] | 3 | [10] | 13 | [17] | 2 | [2] | 1 | | 7 | [5] | 1 | [1] | 1 | | | | | | | 48 | [39] | 5 | [10] | | | | |
| Burundi | 22 | [20] | 3 | [2] | 1 | [2] | 4 | [3] | | [3] | | [2] | | [4] | | [1] | | | | | | | | 12 | [13] | 1 | [4] | | | | |
| Cameroun | 166 | [183] | 17 | [30] | 13 | [26] | 37 | [44] | 3 | [7] | 3 | [4] | 13 | [13] | 1 | [1] | 1 | [1] | | | | | | 113 | [128] | 17 | [31] | | | | |
| Cap-Vert | 1 | | 1 | | 1 | | | | | | | | | | | | | | | | | | | 1 | | 1 | | | | | |
| Chili | 3 | | | | | | 3 | [5] | 1 | [1] | 1 | [1] | 2 | [1] | 1 | [1] | | [1] | | | | | | 6 | [4] | 1 | [2] | | | | |
| Chine | 14 | [17] | 4 | [1] | 2 | | 13 | [13] | 1 | | | | 8 | [3] | 1 | | 1 | | | | | | | 22 | [26] | 3 | | | | | |
| Chypre | | | | | | | 1 | | | | | | | | | | | | | | | | | | 1 | | | | | | |
| Colombie | 5 | [7] | | [2] | | [2] | 6 | [9] | 2 | [1] | 2 | [1] | 1 | [2] | 1 | [2] | 1 | [1] | | | | | | | 10 | [14] | 3 | [4] | | | |
| Congo, république populaire du | 191 | [44] | 16 | [1] | 7 | [1] | 34 | [7] | 1 | | | | 2 | | | | | | | | | | | | 110 | [27] | 7 | [1] | | | |
| Corée du Sud | 5 | [11] | | [3] | | [3] | 1 | | 1 | | | | | | | | | | | | | | | | 3 | [6] | | [3] | | | |
| Côte d'Ivoire | 130 | [119] | 14 | [12] | 9 | [12] | 30 | [38] | 6 | [2] | 3 | | 2 | [11] | | [2] | | [1] | | | | | | | 87 | [84] | 12 | [13] | | | |
| Cuba | 1 | | | | | | 2 | [1] | 1 | [1] | 1 | | | | | | | | | | | | | | 3 | [1] | 1 | | | | |
| Djibouti | 8 | [7] | 1 | | 1 | | | [2] | | | | | | | | | | | | | | | | | 3 | [5] | 1 | | | | |
| Égypte | 15 | [3] | 1 | | 1 | | 4 | [6] | | [3] | | [2] | 1 | [4] | 1 | [1] | 1 | [1] | | | | | | | [1] | [1] | [1] | 12 | [9] | 2 | [4] |

[...] : données de l'année précédente

PROVENANCE DES CANDIDATS ÉTRANGERS - TRIMESTRE D'HIVER

| Pays/États | Premier cycle | | | Deuxième cycle | | | Troisième cycle | | | Internat/Résidence | | | Total | |
|---------------------|---------------|-------|-----------|----------------|-------|-----------|-----------------|-------|----------|--------------------|---------|----------|-----------|-----------------|
| | Choix | Admis | Inscrits | Choix | Admis | Inscrits | Choix | Admis | Inscrits | Choix | Admis | Inscrits | Candidats | Inscrits |
| Émirats arabes unis | | | | 1 | [1] | | | | | | | | 1 | [1] |
| Équateur | [4] | [1] | [1] | 2 | | | | | | | | | 1 | [2] [1] |
| Espagne | [1] | | | 1 | [1] | | | | | [2] | [2] | | 1 | [4] |
| États-Unis | 12 | [6] | 2 [1] | 2 | [1] | 2 [1] | 2 | [3] | 1 [1] | 1 | | | 2 | [1] |
| Éthiopie | 1 | | | | | | | | | | | | 9 | [6] 3 [1] |
| Finlande | | | | 2 | | | | | | | | | 1 | |
| France | 626 | [491] | 183 [151] | 152 | [128] | 146 [114] | 37 | [38] | 26 [30] | 49 [61] | 20 [29] | 18 [23] | 6 [5] | 5 [5] 1 |
| Gabon | 52 | [82] | 8 [4] | 3 | [4] | 7 [11] | | [3] | | [1] | | | 476 | [401] 197 [181] |
| Grèce | 3 | [3] | 1 [1] | | [1] | 1 | | | | | | | 29 | [44] 3 [5] |
| Guinée | 71 | [57] | 7 [1] | 4 | [1] | 13 [15] | | | | | | | 5 | [2] [1] |
| Haiti | 192 | [128] | 19 [8] | 10 | [8] | 31 [19] | 10 | [3] | 4 [3] | 2 | [6] | [3] | | [2] |
| Hongrie | | [1] | | | | 1 | | 1 | 1 | | | | 116 | [83] 14 [13] |
| Inde | 1 | [2] | [1] | | [1] | 1 | | 1 | 1 | | | | 1 | |
| Iran | 1 | [11] | [1] | | | 1 | | 1 | 1 | | | | 7 | [4] 2 [1] |
| Italie | 1 | [8] | [2] | 1 | [1] | 27 [15] | 6 | [4] | 3 [3] | 18 [9] | 3 [3] | 1 [2] | 35 | [24] 4 [5] |
| Japon | | | | | | 3 [1] | 2 | | 1 | | | | 4 | [6] 3 [2] |
| Lettonie | | | | | | [2] | | | | 1 | | 1 | 1 | |
| Liban | 55 | [46] | 11 [2] | 6 | [2] | | | | | 2 | | | 1 | |
| Libye | | | | | | 19 [26] | 3 | [9] | 3 [7] | 6 [5] | 2 [3] | 1 [1] | 3 | 2 |
| Madagascar | | | | | | 3 [3] | | | | [2] | | [2] | 55 | [45] 10 [10] |
| Mali | 21 | [17] | [4] | | [4] | 3 [10] | 1 | [3] | 1 [2] | 2 [5] | 2 | 1 | 2 | |
| Maroc | 126 | [92] | 20 [18] | 17 | [15] | 6 [22] | | [6] | 1 [2] | 2 | 1 | | 15 | [19] 2 [6] |
| Martinique | 303 | [336] | 64 [45] | 46 | [39] | 78 [54] | 3 | [6] | [2] | 16 [18] | 2 [2] | 1 [2] | | [1] |
| Maurice | 4 | [5] | 2 [2] | 1 | [2] | 1 | | [1] | | | | | 207 | [208] 47 [43] |
| Mauritanie | 12 | | 1 | | 1 | | | | | | | | 3 | [2] 1 [2] |
| Mexique | 20 | [7] | 3 | | 2 | | | | | | | | 5 | |
| Moldova | 3 | [1] | [1] | | [1] | 9 [13] | 2 | [2] | 2 [2] | 3 [9] | 2 [8] | 2 [7] | 15 | [6] 2 |
| Niger | 15 | [29] | 2 [2] | 2 | [2] | | | | | | | | 11 | [20] 4 [10] |
| | | | | | | | | | | | | | 2 | [1] |
| | | | | | | 7 [8] | | [1] | [1] | 1 | | | 12 | [19] 2 [3] |

[...] : données de l'année précédente

PROVENANCE DES CANDIDATS ÉTRANGERS - TRIMESTRE D'HIVER

| Pays/États | Premier cycle | | | Deuxième cycle | | | Troisième cycle | | | Internat/Résidence | | | Total | |
|-------------------------------------|---------------|---------------|------------|----------------|------------|--------------|-----------------|--------------|------------|--------------------|-----------|-------------|-------------|---------------|
| | Choix | Admis | Inscrits | Choix | Admis | Inscrits | Choix | Admis | Inscrits | Choix | Admis | Inscrits | Candidats | Inscrits |
| Nigéria | 2 | | | 1 | [5] | | 1 | | | | | | 3 | [3] |
| Norvège | | | | 1 | | 1 | 1 | | | | | | 1 | 1 |
| Ouzbékistan | | | | 1 | | | | | | | | | 1 | |
| Pakistan | [1] | | | | | | | 1 | 1 | 1 | | | 1 | [1] |
| Pays inconnu | | | | 1 | [3] | [1] | | [1] | [1] | [1] | | | 1 | [3] |
| Pérou | 4 | [5] | [1] | [1] | | | | | | | | | 4 | [2] |
| Pologne | | | | | | | 1 | | | | | | 1 | |
| Polynésie française | 3 | | | 2 | | | | | | | | | 2 | |
| République centrafricaine | 2 | | | 3 | [1] | | | [2] | | | | | 3 | [2] |
| République fédérale d'Allemagne | 5 | [1] | 2 | 1 | | | 1 | 4 | [2] | 3 | [1] | 3 | [1] | 4 |
| Roumanie | 8 | [7] | | 3 | [1] | 1 | 1 | 1 | | | | | 6 | [4] |
| Royaume-Uni | 2 | | | 1 | | | | | | | | | 2 | |
| Russie, fédération de | 3 | [7] | 1 | 1 | [3] | | | 1 | | | | | 5 | [4] |
| Rwanda | 7 | [15] | 2 | [4] | 1 | [2] | 13 | [15] | 6 | [3] | 3 | [2] | 16 | [21] |
| Sénégal | 169 | [178] | 21 | [25] | 15 | [22] | 61 | [54] | 2 | [5] | 1 | [4] | 9 | [13] |
| Suède | | | | | | | | 1 | | | | | 1 | |
| Suisse | 8 | [3] | 4 | [1] | 4 | [1] | | [1] | | | 1 | 1 | 5 | [3] |
| Tchad | 11 | [8] | | [2] | | [2] | 2 | [1] | | | | | 4 | [2] |
| Togo | 77 | [28] | 9 | [4] | 7 | [4] | 12 | [12] | | | | | 4 | [6] |
| Tunisie | 107 | [138] | 12 | [13] | 10 | [11] | 112 | [79] | 11 | [6] | 7 | [5] | 25 | [33] |
| Turquie | 4 | | 1 | | 1 | | 1 | [1] | | | | | 4 | [2] |
| Turquie | | | | | | | 3 | [3] | | | | | 3 | [3] |
| Turquie | | | | | | | | | | | | | 4 | [1] |
| Turquie | | | | | | | | | | | | | 3 | [1] |
| Turquie | | | | | | | | | | | | | 4 | [4] |
| Turquie | | | | | | | | | | | | | 2 | [1] |
| Turquie | | | | | | | | | | | | | 3 | [1] |
| Turquie | | | | | | | | | | | | | 4 | [4] |
| Turquie | | | | | | | | | | | | | 10 | [5] |
| Turquie | | | | | | | | | | | | | 3 | [1] |
| Total Réguliers | 2919 | [2486] | 469 | [379] | 348 | [332] | 886 | [810] | 120 | [125] | 75 | [81] | 239 | [269] |
| | | | | | | | | | | | | | 56 | [75] |
| | | | | | | | | | | | | | 43 | [58] |
| | | | | | | | | | | | | | 12 | [11] |
| | | | | | | | | | | | | | 9 | [9] |
| | | | | | | | | | | | | | 1 | [1] |
| | | | | | | | | | | | | | 2188 | [1990] |
| | | | | | | | | | | | | | 467 | [472] |
| <u>Programmes d'échanges</u> | | | | | | | | | | | | | | |

[...] : données de l'année précédente

PROVENANCE DES CANDIDATS ÉTRANGERS - TRIMESTRE D'HIVER

| Pays/États | Premier cycle | | | Deuxième cycle | | | Troisième cycle | | | Internat/Résidence | | | Total | | | | | |
|---------------------------------|---------------|-------|----------|----------------|-------|----------|-----------------|-------|----------|--------------------|-------|----------|-----------|----------|-----|------|---|-----|
| | Choix | Admis | Inscrits | Choix | Admis | Inscrits | Choix | Admis | Inscrits | Choix | Admis | Inscrits | Candidats | Inscrits | | | | |
| Argentine | 1 | 1 | 1 | [1] | [1] | [1] | [1] | [1] | [1] | | | | 1 | [2] | 1 | [2] | | |
| Autriche | 1 | [1] | [1] | [1] | 2 | [1] | 2 | 2 | | | | | 3 | [2] | 2 | [1] | | |
| Belgique | 17 | [15] | 11 | [15] | 12 | [13] | 22 | [14] | 20 | [12] | 16 | [13] | 36 | [27] | 28 | [26] | | |
| Brésil | 7 | [1] | 7 | [1] | 7 | [1] | 1 | [5] | 1 | [4] | 1 | [5] | 2 | [3] | 2 | [3] | 2 | [2] |
| Burkina Faso | | | | | 1 | [1] | 1 | [1] | 1 | [1] | 1 | [1] | | | 1 | [1] | 1 | [1] |
| Cambodge | | | | | 1 | [1] | 1 | [1] | 1 | [1] | 1 | [1] | | | 1 | [1] | 1 | [1] |
| Chili | 1 | [4] | 1 | [3] | 1 | [3] | | | | | | | 1 | [4] | 1 | [3] | | |
| Colombie | 4 | | 3 | | 3 | | | | | | | | 4 | | 3 | | | |
| Espagne | 7 | [3] | 7 | [2] | 6 | [2] | 1 | [1] | | | 1 | | 7 | [4] | 7 | [2] | | |
| États-Unis | 1 | [1] | 1 | [1] | 1 | [1] | | | | | | | 1 | [1] | 1 | [1] | | |
| Finlande | 2 | | 2 | | 2 | | 1 | | 1 | | 1 | | 3 | | 3 | | | |
| France | 54 | [45] | 41 | [35] | 41 | [33] | 71 | [69] | 63 | [60] | 60 | [61] | 125 | [112] | 101 | [94] | | |
| Grèce | | | | | 2 | | 2 | | 2 | | 2 | | 2 | | 2 | | | |
| Italie | | | | | 1 | [1] | 1 | [1] | 1 | [1] | 1 | [1] | 1 | [1] | 1 | [1] | | |
| Luxembourg | | | | | 1 | | 1 | | 1 | | 1 | | 1 | | 1 | | | |
| Maroc | | | | | 1 | | 1 | | 1 | | 1 | | 1 | | 1 | | | |
| Mexique | 8 | [12] | 7 | [10] | 7 | [10] | | [1] | | [1] | | [1] | 8 | [13] | 7 | [11] | | |
| Niger | | | | | 1 | | | | | | | | 1 | | | | | |
| Pays-Bas | 1 | [1] | 1 | [1] | 1 | [1] | | [2] | | [1] | | [1] | 1 | [3] | 1 | [2] | | |
| République fédérale d'Allemagne | 8 | [9] | 8 | [7] | 8 | [7] | 2 | | 2 | | 2 | | 10 | [9] | 10 | [7] | | |
| République tchèque | | [1] | | [1] | | [1] | 2 | [4] | 2 | [4] | 2 | [4] | 2 | [5] | 2 | [5] | | |
| Roumanie | | | | | 1 | | | | | | | | 1 | | | | | |
| Royaume-Uni | | | | | 1 | | 1 | | 1 | | 1 | | 2 | | 2 | | | |
| Russie, fédération de | 2 | | 2 | | 2 | | 1 | | | | | | 3 | | 2 | | | |
| Suède | 3 | [1] | 2 | [1] | 2 | [1] | 2 | | 2 | | 2 | | 4 | [1] | 4 | [1] | | |
| Taiwan | | | | | 1 | | 1 | | 1 | | 1 | | 1 | | 1 | | | |
| Tunisie | 1 | | | | | [1] | | [1] | | [1] | | [1] | 1 | [1] | | [1] | | |

[...] : données de l'année précédente

PROVENANCE DES CANDIDATS ÉTRANGERS - TRIMESTRE D'HIVER

| <i>Pays/États</i> | <i>Premier cycle</i> | | | <i>Deuxième cycle</i> | | | <i>Troisième cycle</i> | | | <i>Internat/Résidence</i> | | | <i>Total</i> | |
|----------------------------------|-----------------------------|---------------------|------------------------|------------------------------|---------------------|------------------------|-------------------------------|---------------------|------------------------|----------------------------------|---------------------|------------------------|-------------------------|------------------------|
| | <i>Choix</i> | <i>Admis</i> | <i>Inscrits</i> | <i>Choix</i> | <i>Admis</i> | <i>Inscrits</i> | <i>Choix</i> | <i>Admis</i> | <i>Inscrits</i> | <i>Choix</i> | <i>Admis</i> | <i>Inscrits</i> | <i>Candidats</i> | <i>Inscrits</i> |
| Venezuela | 1 [2] | 1 [2] | 1 [2] | | | | | | | | | | 1 [2] | 1 [2] |
| Total Échanges | 119 [96] | 95 [80] | 95 [76] | 116 [102] | 102 [87] | 96 [90] | 4 [4] | 4 [4] | 4 [3] | | | | 234 [197] | 195 [169] |
| Total des choix par cycle | 3038 [2582] | 564 [459] | 443 [408] | 1002 [912] | 222 [212] | 171 [171] | 243 [273] | 60 [79] | 47 [61] | 12 [11] | 9 [9] | 1 [1] | | |
| TOTAL DES CHOIX | 4295 [3778] | 855 [759] | 662 [641] | | | | | | | Total des candidats | | | 2422 [2187] | 662 [641] |